

For Research Use Only

# ATP1A1 Monoclonal antibody

Catalog Number: 68735-2-Ig



## Basic Information

<b>Catalog Number:</b> 68735-2-Ig	<b>GenBank Accession Number:</b> BC050359	<b>Purification Method:</b> Protein A purification
<b>Size:</b> 150ul , Concentration: 1000 µg/ml by Nanodrop and 736 µg/ml by Bradford method using BSA as the standard;	<b>GeneID (NCBI):</b> 476	<b>CloneNo.:</b> 1E9B7
<b>Source:</b> Mouse	<b>ENSEMBL Gene ID:</b> ENSG00000163399	<b>Recommended Dilutions:</b> WB 1:5000-1:50000 IHC 1:1000-1:4000 IF/ICC 1:400-1:1600
<b>Isotype:</b> IgG2a	<b>UNIPROT ID:</b> P05023	
<b>Immunogen Catalog Number:</b> AG5990	<b>Full Name:</b> ATPase, Na <sup>+</sup> /K <sup>+</sup> transporting, alpha 1 polypeptide	
	<b>Calculated MW:</b> 113 kDa	
	<b>Observed MW:</b> 100 kDa	

## Applications

<b>Tested Applications:</b> WB, IF, IHC, ELISA	<b>Positive Controls:</b> WB : unboiled A431 cells, unboiled HepG2 cells
<b>Species Specificity:</b> Human	<b>IHC :</b> mouse kidney tissue, <b>IF/ICC :</b> HEK-293 cells,
<b>Note-IHC: suggested antigen retrieval with TE buffer pH 9.0; (*) Alternatively, antigen retrieval may be performed with citrate buffer pH 6.0</b>	

## Background Information

ATP1A1 is the catalytic component of Na<sup>+</sup>/K<sup>+</sup>-ATPase which is a membrane bound enzyme primarily involved in generation of Na<sup>+</sup> and K<sup>+</sup> gradients across plasma membranes and in determination of cytoplasmic Na<sup>+</sup> levels. ATP1A1 is a ubiquitously expressed membrane protein and often used as the marker or internal control for plasma membrane protein. For optimal WB detection of this membrane protein, we recommend to avoid boiling the sample after lysis.

## Storage

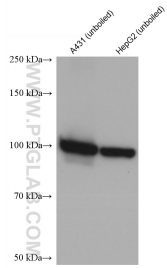
**Storage:**  
Store at -20°C. Stable for one year after shipment.  
**Storage Buffer:**  
PBS with 0.02% sodium azide and 50% glycerol pH 7.3.  
Aliquoting is unnecessary for -20°C storage

\*\*\* 20ul sizes contain 0.1% BSA

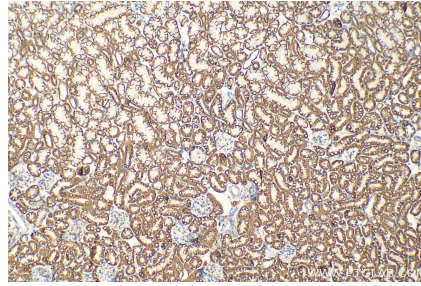
For technical support and original validation data for this product please contact:  
T: 1 (888) 4PTGLAB (1-888-478-4522) (toll free in USA), or 1(312) 455-8498 (outside USA)  
E: proteintech@ptglab.com  
W: ptglab.com

This product is exclusively available under Proteintech Group brand and is not available to purchase from any other manufacturer.

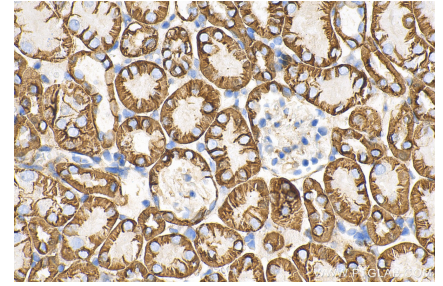
## Selected Validation Data



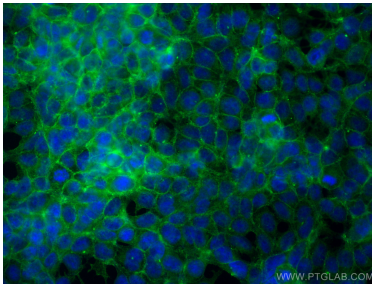
Various lysates were subjected to SDS PAGE followed by western blot with 68735-2-Ig (ATP1A1 antibody) at dilution of 1:10000 incubated at room temperature for 1.5 hours.



Immunohistochemical analysis of paraffin-embedded mouse kidney tissue slide using 68735-2-Ig (ATP1A1 antibody) at dilution of 1:2000 (under 10x lens). Heat mediated antigen retrieval with Tris-EDTA buffer (pH 9.0).



Immunohistochemical analysis of paraffin-embedded mouse kidney tissue slide using 68735-2-Ig (ATP1A1 antibody) at dilution of 1:2000 (under 40x lens). Heat mediated antigen retrieval with Tris-EDTA buffer (pH 9.0).



Immunofluorescent analysis of (-20°C Ethanol) fixed HEK-293 cells using ATP1A1 antibody (68735-2-Ig, Clone: 1E9B7) at dilution of 1:800 and CoraLite®488-Conjugated AffiniPure Goat Anti-Mouse IgG(H+L) (SA00013-1).