

For Research Use Only

# AP1M1 Monoclonal antibody, PBS Only



Catalog Number: 68726-1-PBS

## Basic Information

|   |  |   |
|---|--|---|
| <b>Catalog Number:</b><br>68726-1-PBS                       | <b>GenBank Accession Number:</b><br>BC017469                         | <b>Purification Method:</b><br>Protein A purification |
| <b>Size:</b><br>100ug , Concentration: 1 mg/ml by Nanodrop; | <b>GeneID (NCBI):</b><br>8907  | <b>CloneNo.:</b><br>1E9A11                            |
| <b>Source:</b><br>Mouse                                     | <b>UNIPROT ID:</b><br>Q9BX55   |   |
| <b>Isotype:</b><br>IgG1                                     | <b>Full Name:</b><br>adaptor-related protein complex 1, mu 1 subunit |   |
| <b>Immunogen Catalog Number:</b><br>AG25303                 | <b>Calculated MW:</b><br>423 aa, 49 kDa                              |   |
|   | <b>Observed MW:</b><br>47-49 kDa                                     |   |

## Applications

**Tested Applications:**  
WB, Indirect ELISA

**Species Specificity:**  
Human, mouse

## Background Information

AP1M1, also named as CLTNM, Mu-adaptin 1 and Clathrin coat assembly protein AP47, belongs to the adaptor complexes medium subunit family. It is a subunit of clathrin-associated adaptor protein complex 1 that plays a role in protein sorting in the trans-Golgi network (TGN) and endosomes. The AP complexes mediate the recruitment of clathrin to membranes and the recognition of sorting signals within the cytosolic tails of transmembrane cargo molecules.

## Storage

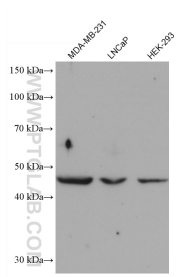
**Storage:**  
Store at -80°C.

**Storage Buffer:**  
PBS Only

For technical support and original validation data for this product please contact:  
T: 1 (888) 4PTGLAB (1-888-478-4522) (toll free in USA), or 1(312) 455-8498 (outside USA)      E: [proteintech@ptglab.com](mailto:proteintech@ptglab.com)  
W: [ptglab.com](http://ptglab.com)

This product is exclusively available under Proteintech Group brand and is not available to purchase from any other manufacturer.

## Selected Validation Data



Various lysates were subjected to SDS PAGE followed by western blot with 68726-1-Ig (AP1M1 antibody) at dilution of 1:10000 incubated at room temperature for 1.5 hours. This data was developed using the same antibody clone with 68726-1-PBS in a different storage buffer formulation.