

For Research Use Only

ADAM17 Monoclonal antibody, PBS Only (Detector)

Catalog Number: 68725-1-PBS



Basic Information

Catalog Number: 68725-1-PBS	GenBank Accession Number: BC136783	Purification Method: Protein G purification
Size: 100ug, Concentration: 1mg/ml by Nanodrop;	GeneID (NCBI): 6868	CloneNo.: 2F4C2
Source: Mouse	UNIPROT ID: P78536	
Isotype: IgG1	Full Name: ADAM metalloproteinase domain 17	
Immunogen Catalog Number: AG34022	Calculated MW: 824 aa, 93 kDa	
	Observed MW: 90-110 kDa	

Applications

Tested Applications:
WB, Cytometric bead array, Indirect ELISA

Species Specificity:
human, mouse

Product Information

68725-1-PBS targets ADAM17 as part of a matched antibody pair:

MP50392-2: 68725-2-PBS capture and 68725-1-PBS detection (validated in Cytometric bead array)

Unconjugated mouse monoclonal antibody pair in PBS only (BSA and azide free) storage buffer at a concentration of 1 mg/mL, ready for conjugation.

This conjugation ready format makes antibodies ideal for use in many applications including: ELISAs, multiplex assays requiring matched pairs, mass cytometry, and multiplex imaging applications. Antibody use should be optimized by the end user for each application and assay.

Background Information

The ADAMs (A Disintegrin And Metalloprotease) are multidomain transmembrane proteins. One of the first ADAMs implicated in membrane shedding is ADAM-17, which is shown to release the active form of tumor necrosis factor (TNF)- α from its precursor (PMID:18238782). ADAM17 is also named as CSVP, TACE. The full length protein has 9 glycosylation sites, a signal peptide, propeptide and 2 isoforms produced by alternative splicing. The 120-kDa form of ADAM-17 is expressed more frequently and at higher levels in primary breast carcinomas compared with normal breast tissue (PMID:17438092).

Storage

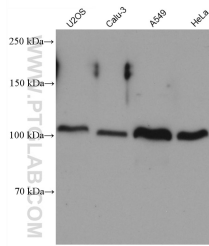
Storage:
Store at -80°C.

Storage Buffer:
PBS Only

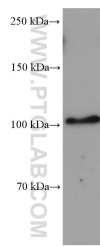
For technical support and original validation data for this product please contact:
T: 1 (888) 4PTGLAB (1-888-478-4522) (toll free in USA), or 1(312) 455-8498 (outside USA)
E: proteintech@ptglab.com
W: ptglab.com

This product is exclusively available under Proteintech Group brand and is not available to purchase from any other manufacturer.

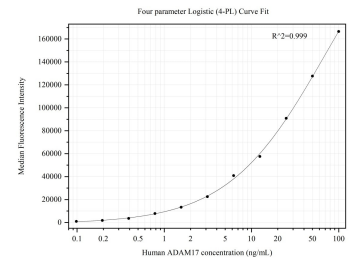
Selected Validation Data



Various lysates were subjected to SDS PAGE followed by western blot with 68725-1-Ig (ADAM17 antibody) at dilution of 1:5000 incubated at room temperature for 1.5 hours. This data was developed using the same antibody clone with 68725-1-PBS in a different storage buffer formulation.



NIH/3T3 cells were subjected to SDS PAGE followed by western blot with 68725-1-Ig (ADAM17 antibody) at dilution of 1:5000 incubated at room temperature for 1.5 hours. This data was developed using the same antibody clone with 68725-1-PBS in a different storage buffer formulation.



Cytometric bead array standard curve of MP50392-2, ADAM17 Monoclonal Matched Antibody Pair, PBS Only. Capture antibody: 68725-2-PBS. Detection antibody: 68725-1-PBS. Standard: Ag34022. Range: 0.098-100 ng/mL.