

For Research Use Only

# CEP135 Monoclonal antibody, PBS Only



Catalog Number: 68715-1-PBS

## Basic Information

<b>Catalog Number:</b> 68715-1-PBS	<b>GenBank Accession Number:</b> BC136535	<b>Purification Method:</b> Protein G purification
<b>Size:</b> 100ug, Concentration: 1 mg/ml by Nanodrop;	<b>GeneID (NCBI):</b> 9662	<b>CloneNo.:</b> 3C4B7
<b>Source:</b> Mouse	<b>UNIPROT ID:</b> Q66GS9	
<b>Isotype:</b> IgG1	<b>Full Name:</b> centrosomal protein 135kDa	
<b>Immunogen Catalog Number:</b> AG19122	<b>Calculated MW:</b> 1140 aa, 134 kDa	
	<b>Observed MW:</b> 135 kDa	

## Applications

**Tested Applications:**  
WB, Indirect ELISA

**Species Specificity:**  
Human

## Background Information

CEP135 is a 135 kDa centrosomal protein that is present in a wide range of organisms. CEP135 is located at the centrosome throughout the cell cycle, and localization is independent of the microtubule network. It distributes throughout the centrosomal area in association with the electron-dense material surrounding centrioles.

## Storage

**Storage:**  
Store at -80°C.

**Storage Buffer:**  
PBS Only

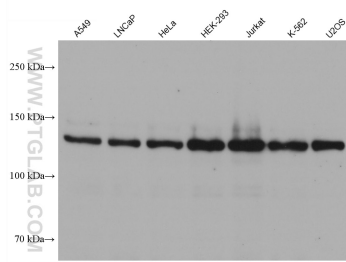
For technical support and original validation data for this product please contact:

T: 1 (888) 4PTGLAB (1-888-478-4522) (toll free in USA), or 1(312) 455-8498 (outside USA)

E: [proteintech@ptglab.com](mailto:proteintech@ptglab.com)  
W: [ptglab.com](http://ptglab.com)

**This product is exclusively available under Proteintech Group brand and is not available to purchase from any other manufacturer.**

## Selected Validation Data



Various lysates were subjected to SDS PAGE followed by western blot with 68715-1-Ig (CEP135 antibody) at dilution of 1:10000 incubated at room temperature for 1.5 hours. This data was developed using the same antibody clone with 68715-1-PBS in a different storage buffer formulation.