

For Research Use Only

# MUC20 Monoclonal antibody, PBS Only

Catalog Number: 68714-1-PBS



## Basic Information

<b>Catalog Number:</b> 68714-1-PBS	<b>GenBank Accession Number:</b> BC029267	<b>Purification Method:</b> Protein A purification
<b>Size:</b> 100ug , Concentration: 1mg/ml by Nanodrop;	<b>GeneID (NCBI):</b> 200958	<b>CloneNo.:</b> 1G9B2
<b>Source:</b> Mouse	<b>UNIPROT ID:</b> Q8N307	
<b>Isotype:</b> IgG3	<b>Full Name:</b> mucin 20, cell surface associated	
<b>Immunogen Catalog Number:</b> AG31840	<b>Calculated MW:</b> 55 kDa, 71 kDa	
	<b>Observed MW:</b> 70 kDa	

## Applications

**Tested Applications:**  
WB, IF/ICC, Indirect ELISA

**Species Specificity:**  
human, canine

## Background Information

MUC20 contains serine, threonine, and proline-rich repeats in its extracellular domain and is likely to be extensively O-glycosylated. MUC20 blocks GRB2 recruitment to MET thus suppressing the GRB2-RAS pathway and inhibiting HGF-induced proliferation of MMP1 and MMP9 expression (PMID: 15314156). MUC20 is highly expressed in the kidney and localized in the proximal tubules but not in the glomerulus or distal tubules (PMID: 14565953). MUC20 was detected in most of the male urogenital tract epithelia, except for epididymis (PMID: 16997931). The expression of MUC20 is up-regulated in the kidneys of patients with immunoglobulin A nephropathy, in an animal model of lupus nephritis, and in mice with acute renal injury caused by cisplatin administration or unilateral ureteral obstruction (PMID: 14565953).

## Storage

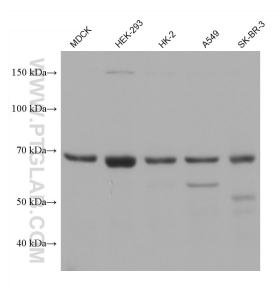
**Storage:**  
Store at -80°C.

**Storage Buffer:**  
PBS Only

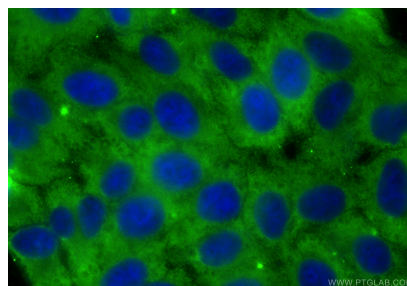
For technical support and original validation data for this product please contact:  
T: 1 (888) 4PTGLAB (1-888-478-4522) (toll free in USA), or 1(312) 455-8498 (outside USA)  
E: [proteintech@ptglab.com](mailto:proteintech@ptglab.com)  
W: [ptglab.com](http://ptglab.com)

This product is exclusively available under Proteintech Group brand and is not available to purchase from any other manufacturer.

## Selected Validation Data



Various lysates were subjected to SDS PAGE followed by western blot with 68714-1-Ig (MUC20 antibody) at dilution of 1:2000 incubated at room temperature for 1.5 hours. This data was developed using the same antibody clone with 68714-1-PBS in a different storage buffer formulation.



Immunofluorescent analysis of (-20°C Ethanol) fixed HepG2 cells using MUC20 antibody (68714-1-Ig, Clone: 1G9B2) at dilution of 1:800 and CoraLite®488-Conjugated Goat Anti-Mouse IgG(H+L) (SA00013-1). This data was developed using the same antibody clone with 68714-1-PBS in a different storage buffer formulation.