

For Research Use Only

# MTF2 Monoclonal antibody

Catalog Number: 68713-1-Ig



## Basic Information

<b>Catalog Number:</b> 68713-1-Ig	<b>GenBank Accession Number:</b> BC010013	<b>Purification Method:</b> Protein A purification
<b>Size:</b> 150ul , Concentration: 1000 ug/ml by Nanodrop;	<b>GeneID (NCBI):</b> 22823	<b>CloneNo.:</b> 2E5D5
<b>Source:</b> Mouse	<b>UNIPROT ID:</b> Q9Y483	<b>Recommended Dilutions:</b> WB 1:5000-1:50000
<b>Isotype:</b> IgG2b	<b>Full Name:</b> metal response element binding transcription factor 2	
<b>Immunogen Catalog Number:</b> AG9384	<b>Calculated MW:</b> 536 aa, 61 kDa	
	<b>Observed MW:</b> 55 kDa, 60 kDa, 75 kDa	

## Applications

<b>Tested Applications:</b> WB, ELISA	<b>Positive Controls:</b> WB : HeLa cells, HEK-293 cells, HepG2 cells, Jurkat cells, K-562 cells, HSC-T6 cells, NIH/3T3 cells, Rabbit testis tissue, Mouse testis tissue
<b>Species Specificity:</b> Human, Rat, Rabbit, Mouse	

## Background Information

MTF2, also named as Metal-response element-binding transcription factor 2, is a 593 amino acid protein. It exists several isoforms and the range of the molecular weight of isoforms are about 55-60 kDa and 29 kDa. MTF2 contains 2 PHD-type zinc fingers and belongs to the Polycomblike family. MTF2 acts by binding to H3K36me3, a mark for transcriptional activation, and recruiting the PRC2 complex, leading to enhance PRC2 H3K27me3 methylation activity and regulates the transcriptional networks during embryonic stem cell self-renewal and differentiation.

## Storage

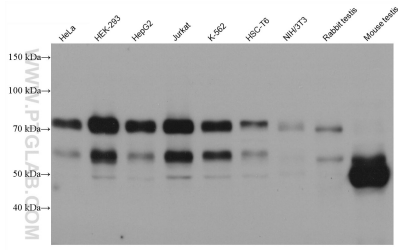
**Storage:**  
Store at -20°C. Stable for one year after shipment.  
**Storage Buffer:**  
PBS with 0.02% sodium azide and 50% glycerol pH 7.3.  
Aliquoting is unnecessary for -20°C storage

\*\*\* 20ul sizes contain 0.1% BSA

For technical support and original validation data for this product please contact:  
T: 1 (888) 4PTGLAB (1-888-478-4522) (toll free in USA), or 1(312) 455-8498 (outside USA)  
E: proteintech@ptglab.com  
W: ptglab.com

This product is exclusively available under Proteintech Group brand and is not available to purchase from any other manufacturer.

## Selected Validation Data



Various lysates were subjected to SDS PAGE followed by western blot with 68713-1-Ig (MTF2 antibody) at dilution of 1:10000 incubated at room temperature for 1.5 hours.