

For Research Use Only

# TPX2 Monoclonal antibody, PBS Only



Catalog Number: 68712-1-PBS

## Basic Information

<b>Catalog Number:</b> 68712-1-PBS	<b>GenBank Accession Number:</b> BC020207	<b>Purification Method:</b> Protein A purification
<b>Size:</b> 100ug , Concentration: 1 mg/ml by Nanodrop;	<b>GeneID (NCBI):</b> 22974	<b>CloneNo.:</b> 2E10C1
<b>Source:</b> Mouse	<b>UNIPROT ID:</b> Q9ULW0	
<b>Isotype:</b> IgG2b	<b>Full Name:</b> TPX2, microtubule-associated, homolog (Xenopus laevis)	
<b>Immunogen Catalog Number:</b> AG33683	<b>Calculated MW:</b> 747 aa, 86 kDa	
	<b>Observed MW:</b> 98 kDa	

## Applications

**Tested Applications:**  
WB, Indirect ELISA

**Species Specificity:**  
Human, mouse, rat

## Background Information

TPX2, also known as DIL2, p10, is a microtubule organization- and cell cycle-associated protein. In the early stage of mitosis, TPX2 is released in a RanGTP-dependent manner and plays a significant role in mitotic spindle formation and subsequent proper segregation of chromosomes during cell division. Furthermore, during interphase, TPX2 is involved in DNA damage response by regulation of  $\gamma$ -H2AX signals (PMID: 25914189). Aberrant expression of TPX2 leads to improper spindle assembly and chromosomal instability. Overexpressed in cancers, TPX2 is being established as the marker for the diagnosis and prognosis of malignancies (PMID: 24556998).

## Storage

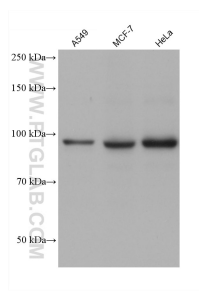
**Storage:**  
Store at -80°C.

**Storage Buffer:**  
PBS Only

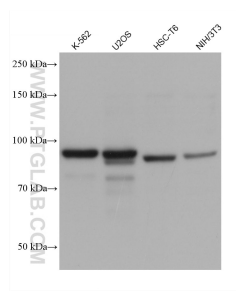
For technical support and original validation data for this product please contact:  
T: 1 (888) 4PTGLAB (1-888-478-4522) (toll free in USA), or 1(312) 455-8498 (outside USA)      E: proteintech@ptglab.com  
W: ptglab.com

**This product is exclusively available under Proteintech Group brand and is not available to purchase from any other manufacturer.**

## Selected Validation Data



Various lysates were subjected to SDS PAGE followed by western blot with 68712-1-Ig (TPX2 antibody) at dilution of 1:20000 incubated at room temperature for 1.5 hours. This data was developed using the same antibody clone with 68712-1-PBS in a different storage buffer formulation.



Various lysates were subjected to SDS PAGE followed by western blot with 68712-1-Ig (TPX2 antibody) at dilution of 1:20000 incubated at room temperature for 1.5 hours. This data was developed using the same antibody clone with 68712-1-PBS in a different storage buffer formulation.