

For Research Use Only

FCGR3B/CD16b Monoclonal antibody, PBS Only (Capture/Detector)

Catalog Number: 68677-2-PBS



Basic Information

Catalog Number: 68677-2-PBS	GenBank Accession Number: NM_000570	Purification Method: Protein A purification
Size: 100ug , Concentration: 1 mg/ml by Nanodrop;	GeneID (NCBI): 2215	CloneNo.: 4E7D3
Source: Mouse	UNIPROT ID: O75015	
Isotype: IgG2a	Full Name: Fc fragment of IgG, low affinity IIIb, receptor (CD16b)	
Immunogen Catalog Number: EG0308	Calculated MW: 26 kDa	

Applications

Tested Applications:
Cytometric bead array, Sandwich ELISA, Indirect ELISA, Sample test

Species Specificity:
human

Product Information

68677-2-PBS targets FCGR3B/CD16b as part of a matched antibody pair:

MP50059-1: 68677-1-PBS capture and 68677-2-PBS detection (validated in Sandwich ELISA)

MP50059-2: 68677-2-PBS capture and 68677-3-PBS detection (validated in Cytometric bead array)

Unconjugated mouse monoclonal antibody pair in PBS only (BSA and azide free) storage buffer at a concentration of 1 mg/mL, ready for conjugation.

This conjugation ready format makes antibodies ideal for use in many applications including: ELISAs, multiplex assays requiring matched pairs, mass cytometry, and multiplex imaging applications. Antibody use should be optimized by the end user for each application and assay.

Storage

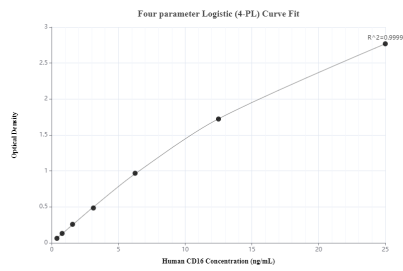
Storage:
Store at -80°C.

Storage Buffer:
PBS only, pH7.3

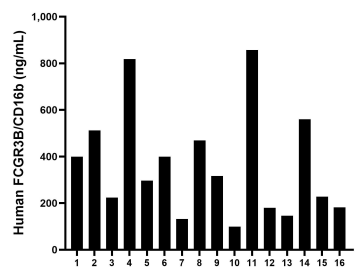
For technical support and original validation data for this product please contact:
T: 1 (888) 4PTGLAB (1-888-478-4522) (toll free in USA), or 1(312) 455-8498 (outside USA)
E: proteintech@ptglab.com
W: ptglab.com

This product is exclusively available under Proteintech Group brand and is not available to purchase from any other manufacturer.

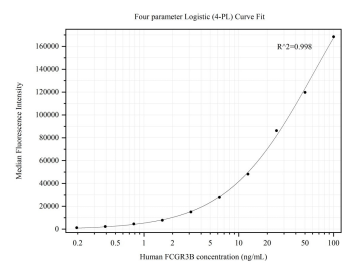
Selected Validation Data



Sandwich ELISA standard curve of MP50059-1, FCGR3B Monoclonal Matched Antibody Pair, PBS Only. Capture antibody: 68677-1-PBS. Detection antibody: 68677-2-PBS. Standard: Eg0308. Range: 0.39-25 ng/mL.



Serum of sixteen individual healthy human donors was measured. The FCGR3B/CD16b concentration of detected samples was determined to be 363.71 ng/mL with a range of 99.26-857.41 ng/mL.



Cytometric bead array standard curve of MP50059-2, FCGR3B Monoclonal Matched Antibody Pair, PBS Only. Capture antibody: 68677-2-PBS. Detection antibody: 68677-3-PBS. Standard:Eg0308. Range: 0.195-100 ng/mL.