

For Research Use Only

CD86 Monoclonal antibody, PBS Only (Detector)

Catalog Number: 68674-2-PBS



Basic Information

Catalog Number: 68674-2-PBS	GenBank Accession Number: NM_175862	Purification Method: Protein G purification
Size: 100ug, Concentration: 1mg/ml by Nanodrop;	GeneID (NCBI): 942	CloneNo.: 1D6H7
Source: Mouse	ENSEMBL Gene ID: ENSG00000114013	
Isotype: IgG1	UNIPROT ID: P42081	
	Full Name: CD86 molecule	
	Calculated MW: 329 aa, 38 kDa	

Applications

Tested Applications:
WB, Sandwich ELISA, Indirect ELISA

Species Specificity:
human

Product Information

68674-2-PBS targets CD86 as part of a matched antibody pair:

MP50056-1: 68674-1-PBS capture and 68674-2-PBS detection (validated in Sandwich ELISA)

Unconjugated mouse monoclonal antibody pair in PBS only (BSA and azide free) storage buffer at a concentration of 1 mg/mL, ready for conjugation.

This conjugation ready format makes antibodies ideal for use in many applications including: ELISAs, multiplex assays requiring matched pairs, mass cytometry, and multiplex imaging applications. Antibody use should be optimized by the end user for each application and assay.

Storage

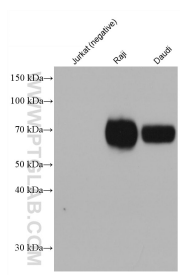
Storage:
Store at -80°C.

Storage Buffer:
PBS Only

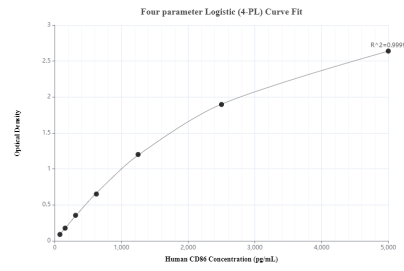
For technical support and original validation data for this product please contact:
T: 1 (888) 4PTGLAB (1-888-478-4522) (toll free in USA), or 1(312) 455-8498 (outside USA) E: proteintech@ptglab.com
W: ptglab.com

This product is exclusively available under Proteintech Group brand and is not available to purchase from any other manufacturer.

Selected Validation Data



Various lysates were subjected to SDS PAGE followed by western blot with 68674-2-Ig (CD86 antibody) at dilution of 1:10000 incubated at room temperature for 1.5 hours. This data was developed using the same antibody clone with 68674-2-PBS in a different storage buffer formulation.



Sandwich ELISA standard curve of MP50056-1, CD86 Monoclonal Matched Antibody Pair, PBS Only. Capture antibody: 68674-1-PBS. Detection antibody: 68674-2-PBS. Standard: Eg0059. Range: 78.1-5000 pg/mL