

For Research Use Only

# M-CSF Monoclonal antibody, PBS Only (Detector)

Catalog Number: 68662-1-PBS



## Basic Information

Catalog Number:

68662-1-PBS

Size:

100ug, Concentration: 1mg/ml by Nanodrop;

Source:

Mouse

Isotype:

IgG1

Immunogen Catalog Number:

HZ-1192

GenBank Accession Number:

GeneID (NCBI):

1435

Full Name:

colony stimulating factor 1 (macrophage)

Purification Method:

Protein G purification

CloneNo.:

2C3B4

Affinity:

$K_D = 9.64 \times 10^{-10}M$

$K_{off} = 8.75 \times 10^{-5}M$

$K_{on} = 9.08 \times 10^4M$

## Applications

Tested Applications:

Sandwich ELISA, Indirect ELISA, Sample test

Species Specificity:

human

## Product Information

68662-1-PBS targets M-CSF as part of a matched antibody pair.

MP50033-1: 69033-1-PBS capture and 68662-1-PBS detection (validated in Sandwich ELISA)

Unconjugated mouse monoclonal antibody pair in PBS only (BSA and azide free) storage buffer at a concentration of 1 mg/mL, ready for conjugation.

This conjugation ready format makes antibodies ideal for use in many applications including: ELISAs, multiplex assays requiring matched pairs, mass cytometry, and multiplex imaging applications. Antibody use should be optimized by the end user for each application and assay.

## Storage

Storage:

Store at -80°C.

Storage Buffer:

PBS only, pH7.3

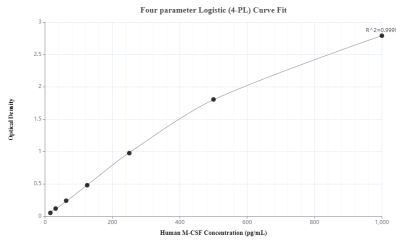
For technical support and original validation data for this product please contact:

T: 1 (888) 4PTGLAB (1-888-478-4522) (toll free in USA), or 1(312) 455-8498 (outside USA)

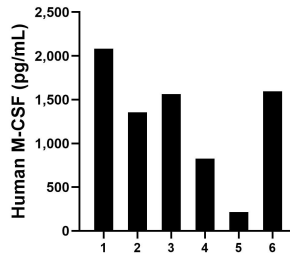
E: [proteintech@ptglab.com](mailto:proteintech@ptglab.com)  
W: [ptglab.com](http://ptglab.com)

This product is exclusively available under Proteintech Group brand and is not available to purchase from any other manufacturer.

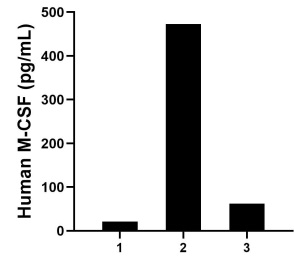
## Selected Validation Data



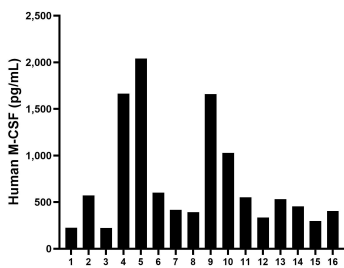
Sandwich ELISA standard curve of MP50033-1, MCSF Monoclonal Matched Antibody Pair - PBS Only. 69033-1-PBS was coated to a plate as the capture antibody and incubated with serial dilutions of standard HZ-1192. 68662-1-PBS was HRP conjugated as the detection antibody. Range: 15.6-1000 pg/mL.



Urine of six individual healthy human donors was measured. The M-CSF concentration of detected samples was determined to be 1,272.6 pg/mL with a range of 216.3-2,082.1 pg/mL.



Saliva of three individual healthy human donors was measured. The M-CSF concentration of detected samples was determined to be 185.5 pg/mL with a range of 21.3-473.0 pg/mL.



Serum of sixteen individual healthy human donors was measured. The M-CSF concentration of detected samples was determined to be 712.6 pg/mL with a range of 223.9-2,041.6 pg/mL.