

For Research Use Only

golgin 97 Monoclonal antibody, PBS Only (Detector)

Catalog Number: 68648-1-PBS



Basic Information

Catalog Number: 68648-1-PBS	GenBank Accession Number: BC032853	Purification Method: Protein A purification
Size: 100ug, Concentration: 1 mg/ml by Nanodrop;	GeneID (NCBI): 2800	CloneNo.: 2A5E4
Source: Mouse	UNIPROT ID: Q92805	
Isotype: IgG2a	Full Name: golgi autoantigen, golgin subfamily a, 1	
Immunogen Catalog Number: AG33790	Calculated MW: 767 aa, 88 kDa	
	Observed MW: 97 kDa	

Applications

Tested Applications:
WB, IF/ICC, Cytometric bead array, Indirect ELISA

Species Specificity:
human

Product Information

68648-1-PBS targets golgin 97 as part of a matched antibody pair:

MP50871-1: 68648-2-PBS capture and 68648-1-PBS detection (validated in Cytometric bead array)

MP50871-3: 68648-3-PBS capture and 68648-1-PBS detection (validated in Cytometric bead array)

Unconjugated mouse monoclonal antibody pair in PBS only (BSA and azide free) storage buffer at a concentration of 1 mg/mL, ready for conjugation.

This conjugation ready format makes antibodies ideal for use in many applications including: ELISAs, multiplex assays requiring matched pairs, mass cytometry, and multiplex imaging applications. Antibody use should be optimized by the end user for each application and assay.

Background Information

Golgin subfamily A member 1 is a protein that in humans is encoded by the GOLGA1 gene. GOLGA1 has been shown to interact with ARL1. GOLGA1 is associated with Sjogren's syndrome. The MW of this protein is 97 kDa. IF result shows strong Golgi staining.

Storage

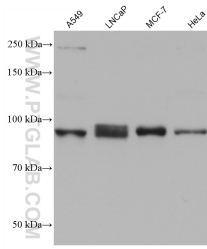
Storage:
Store at -80°C.

Storage Buffer:
PBS Only

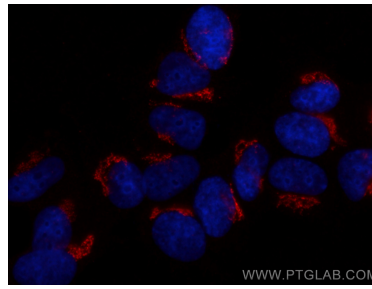
For technical support and original validation data for this product please contact:
T: 1 (888) 4PTGLAB (1-888-478-4522) (toll free in USA), or 1(312) 455-8498 (outside USA) E: proteintech@ptglab.com W: ptglab.com

This product is exclusively available under Proteintech Group brand and is not available to purchase from any other manufacturer.

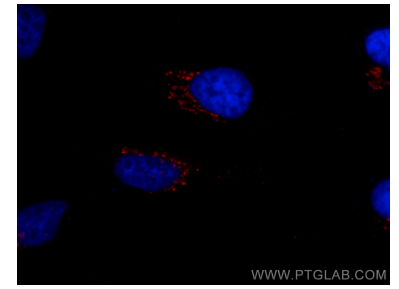
Selected Validation Data



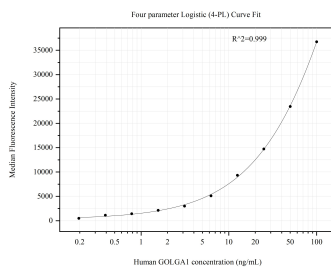
Various lysates were subjected to SDS PAGE followed by western blot with 68648-1-Ig (golgin 97 antibody) at dilution of 1:5000 incubated at room temperature for 1.5 hours. This data was developed using the same antibody clone with 68648-1-PBS in a different storage buffer formulation.



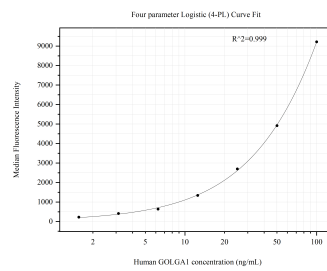
Immunofluorescent analysis of (4% PFA) fixed MCF-7 cells using golgin 97 antibody (68648-1-Ig, Clone: 2A5E4) at dilution of 1:0 and Multi-rAb CoraLite® Plus 594-Goat Anti-Mouse Recombinant Secondary Antibody (H+L) (RGAM004). This data was developed using the same antibody clone with 68648-1-PBS in a different storage buffer formulation.



Immunofluorescent analysis of (4% PFA) fixed HeLa cells using golgin 97 antibody (68648-1-Ig, Clone: 2A5E4) at dilution of 1:0 and Multi-rAb CoraLite® Plus 594-Goat Anti-Mouse Recombinant Secondary Antibody (H+L) (RGAM004). This data was developed using the same antibody clone with 68648-1-PBS in a different storage buffer formulation.



Cytometric bead array standard curve of MP50871-1, GOLGA1 Monoclonal Matched Antibody Pair, PBS Only. Capture antibody: 68648-2-PBS. Detection antibody: 68648-1-PBS. Standard: Ag33790. Range: 0.195-100 ng/mL



Cytometric bead array standard curve of MP50871-3, GOLGA1 Monoclonal Matched Antibody Pair, PBS Only. Capture antibody: 68648-3-PBS. Detection antibody: 68648-1-PBS. Standard: Ag33790. Range: 1.563-100 ng/mL