

For Research Use Only

RAD1 Monoclonal antibody

Catalog Number: 68637-1-Ig



Basic Information

Catalog Number: 68637-1-Ig	GenBank Accession Number: BC006837	Purification Method: Protein A purification
Size: 150ul , Concentration: 1000 µg/ml by Nanodrop;	GeneID (NCBI): 5810	CloneNo.: 1A11E2
Source: Mouse	Full Name: RAD1 homolog (S. pombe)	Recommended Dilutions: WB 1:2000-1:10000 IP 0.5-4.0 ug for 1.0-3.0 mg of total protein lysate
Isotype: IgG2a	Calculated MW: 32 kDa	
Immunogen Catalog Number: AG33257	Observed MW: 32 kDa	

Applications

Tested Applications: IP, WB, ELISA	Positive Controls:
Species Specificity: Human	WB : MKN-45 cells, U2OS cells, HeLa cells, HEK-293 cells, Jurkat cells, MOLT-4 cells, Raji cells, Daudi cells, K-562 cells
	IP : HeLa cells,

Background Information

RAD1 is also named as REC1,hRAD1. The human RAD1 and HUS1 proteins associate in a complex that interacts with a highly modified form of RAD9. They concluded that these 3 proteins are central components of a DNA damage-responsive protein complex in human cells. It has 3 isoforms produced by alternative splicing.

Storage

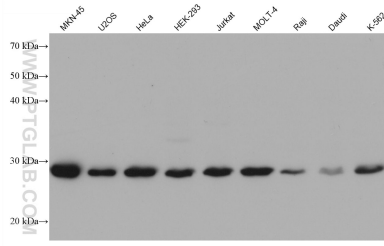
Storage:
Store at -20°C. Stable for one year after shipment.
Storage Buffer:
PBS with 0.02% sodium azide and 50% glycerol pH 7.3.
Aliquoting is unnecessary for -20°C storage

*** 20ul sizes contain 0.1% BSA

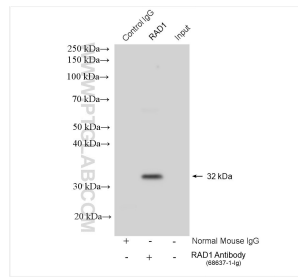
For technical support and original validation data for this product please contact:
T: 1 (888) 4PTGLAB (1-888-478-4522) (toll free in USA), or 1(312) 455-8498 (outside USA)
E: proteintech@ptglab.com
W: ptglab.com

This product is exclusively available under Proteintech Group brand and is not available to purchase from any other manufacturer.

Selected Validation Data



Various lysates were subjected to SDS PAGE followed by western blot with 68637-1-Ig (RAD1 antibody) at dilution of 1:5000 incubated at room temperature for 1.5 hours.



IP result of anti-RAD1(IP:68637-1-Ig, 4ug; Detection:68637-1-Ig 1:1000) with HeLa cells lysate 1320 ug.