

For Research Use Only

# TFEB Monoclonal antibody, PBS Only (Detector)



Catalog Number: 68632-2-PBS

## Basic Information

|   |  |   |
|---|--|---|
| <b>Catalog Number:</b><br>68632-2-PBS                         | <b>GenBank Accession Number:</b><br>BC032448 | <b>Purification Method:</b><br>Protein G purification |
| <b>Size:</b><br>100ug , Concentration: 1mg/ml by<br>Nanodrop; | <b>GeneID (NCBI):</b><br>7942                | <b>CloneNo.:</b><br>1D1B9                             |
| <b>Source:</b><br>Mouse                                       | <b>UNIPROT ID:</b><br>P19484                 |   |
| <b>Isotype:</b><br>IgG1                                       | <b>Full Name:</b><br>transcription factor EB |   |
| <b>Immunogen Catalog Number:</b><br>AG24850                   | <b>Calculated MW:</b><br>476 aa, 53 kDa      |   |

## Applications

**Tested Applications:**  
Cytometric bead array, Indirect ELISA

**Species Specificity:**  
human

## Product Information

68632-2-PBS targets TFEB as part of a matched antibody pair:

MP50099-1: 68632-1-PBS capture and 68632-2-PBS detection (validated in Cytometric bead array)

Unconjugated mouse monoclonal antibody pair in PBS only (BSA and azide free) storage buffer at a concentration of 1 mg/mL, ready for conjugation.

This conjugation ready format makes antibodies ideal for use in many applications including: ELISAs, multiplex assays requiring matched pairs, mass cytometry, and multiplex imaging applications. Antibody use should be optimized by the end user for each application and assay.

## Storage

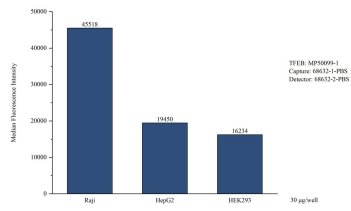
**Storage:**  
Store at -80°C.

**Storage Buffer:**  
PBS Only

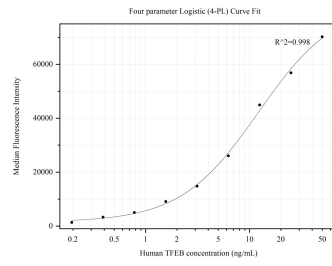
For technical support and original validation data for this product please contact:  
T: 1 (888) 4PTGLAB (1-888-478-4522) (toll free in USA), or 1(312) 455-8498 (outside USA)      E: proteintech@ptglab.com  
W: ptglab.com

**This product is exclusively available under Proteintech Group brand and is not available to purchase from any other manufacturer.**

## Selected Validation Data



Cytometric bead array in cell lysate using MP50099-1, TFEB Monoclonal Matched Antibody Pair, PBS Only. Capture antibody: 68632-1-PBS. Detection antibody: 68632-2-PBS. Cell lysate: Raji HepG2 HEK293.



Cytometric bead array standard curve of MP50099-1, TFEB Monoclonal Matched Antibody Pair, PBS Only. Capture antibody: 68632-1-PBS. Detection antibody: 68632-2-PBS. Standard: Ag24850. Range: 0.195-50 ng/mL.