

For Research Use Only

TFEB Monoclonal antibody, PBS Only (Capture)



Catalog Number: 68632-1-PBS

Basic Information

Catalog Number: 68632-1-PBS	GenBank Accession Number: BC032448	Purification Method: Protein G purification
Size: 100ug, Concentration: 1mg/ml by Nanodrop;	GeneID (NCBI): 7942	CloneNo.: 1C2D9
Source: Mouse	UNIPROT ID: P19484	
Isotype: IgG1	Full Name: transcription factor EB	
Immunogen Catalog Number: AG24850	Calculated MW: 476 aa, 53 kDa	
	Observed MW: 53, 65-70 kDa	

Applications

Tested Applications:
WB, Cytometric bead array, Indirect ELISA

Species Specificity:
human

Product Information

68632-1-PBS targets TFEB as part of a matched antibody pair:

MP50099-1: 68632-1-PBS capture and 68632-2-PBS detection (validated in Cytometric bead array)

Unconjugated mouse monoclonal antibody pair in PBS only (BSA and azide free) storage buffer at a concentration of 1 mg/mL, ready for conjugation.

This conjugation ready format makes antibodies ideal for use in many applications including: ELISAs, multiplex assays requiring matched pairs, mass cytometry, and multiplex imaging applications. Antibody use should be optimized by the end user for each application and assay.

Background Information

Transcription factor EB (TFEB) is one of the transcription factors that contain a basic HLH-ZIP domain (for DNA binding) and HLH and ZIP domains (for oligomerization). TFEB specifically recognizes and binds to E-box sequences, which required dimerization with itself or another MiT/TFE family member. It plays a role in T-cell-dependent antibody responses to activated CD4+ T-cells and thymus-dependent humoral immunity once associated with TFE3. It also activates lysosomal gene by binding the CLEAR-box sequence in the regulatory region. It involves in the signal transduction processes required for normal vascularization of the placenta. This is a rabbit polyclonal antibody raised against the full length of human TFEB. The calculated molecular weight of TFEB is 53 kDa, but modified TFEB is about 65-70 kDa (PMID: 12837690). TFEB mainly present in the cytoplasm (PubMed:23434374). Under aberrant lysosomal storage conditions, it translocates from the cytoplasm to the nucleus (PubMed:23434374). Fisetin increases the levels of TFEB localized in nuclei (PMID: 27112200).

Storage

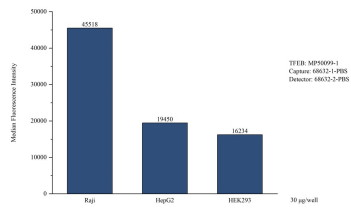
Storage:
Store at -80°C.

Storage Buffer:
PBS Only

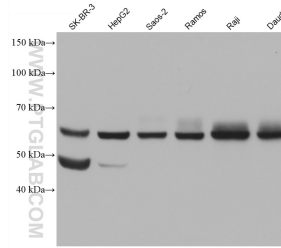
For technical support and original validation data for this product please contact:
T: 1 (888) 4PTGLAB (1-888-478-4522) (toll free in USA), or 1(312) 455-8498 (outside USA)
E: proteintech@ptglab.com
W: ptglab.com

This product is exclusively available under Proteintech Group brand and is not available to purchase from any other manufacturer.

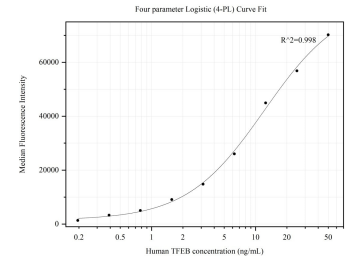
Selected Validation Data



Cytometric bead array in cell lysate using MP50099-1, TFEB Monoclonal Matched Antibody Pair, PBS Only. Capture antibody: 68632-1-PBS. Detection antibody: 68632-2-PBS. Cell lysate: Raji HepG2 HEK293.



Various lysates were subjected to SDS PAGE followed by western blot with 68632-1-Ig (TFEB antibody) at dilution of 1:10000 incubated at room temperature for 1.5 hours. This data was developed using the same antibody clone with 68632-1-PBS in a different storage buffer formulation.



Cytometric bead array standard curve of MP50099-1, TFEB Monoclonal Matched Antibody Pair, PBS Only. Capture antibody: 68632-1-PBS. Detection antibody: 68632-2-PBS. Standard: Ag24850. Range: 0.195-50 ng/mL.