

For Research Use Only

UNR; CSDE1 Monoclonal antibody, PBS Only



Catalog Number: 68629-1-PBS

Basic Information

| | | |
|--|--|---|
| Catalog Number: 68629-1-PBS | GenBank Accession Number: BC032446 | Purification Method: Protein G purification |
| Size: 100ug , Concentration: 1 mg/ml by Nanodrop; | GeneID (NCBI): 7812 | CloneNo.: 1D9C5 |
| Source: Mouse | UNIPROT ID: O75534 | |
| Isotype: IgG1 | Full Name: cold shock domain containing E1, RNA-binding | |
| Immunogen Catalog Number: AG4349 | Calculated MW: 798 aa, 89 kDa | |
| | Observed MW: 85-90 kDa | |

Applications

Tested Applications:
WB, Indirect ELISA

Species Specificity:
Human, mouse, rat

Storage

Storage:
Store at -80°C.

Storage Buffer:
PBS Only

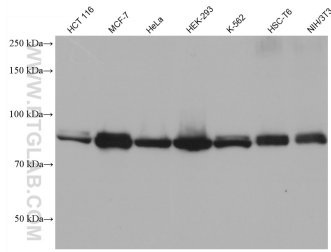
For technical support and original validation data for this product please contact:

T: 1 (888) 4PTGLAB (1-888-478-4522) (toll free
in USA), or 1(312) 455-8498 (outside USA)

E: proteintech@ptglab.com
W: ptglab.com

This product is exclusively available under Proteintech Group brand and is not available to purchase from any other manufacturer.

Selected Validation Data



Various lysates were subjected to SDS PAGE followed by western blot with 68629-1-Ig (UNR; CSDE1 antibody) at dilution of 1:10000 incubated at room temperature for 1.5 hours. This data was developed using the same antibody clone with 68629-1-PBS in a different storage buffer formulation.