

For Research Use Only

# STAM Monoclonal antibody, PBS Only

Catalog Number: 68628-1-PBS



## Basic Information

Catalog Number:

68628-1-PBS

Size:

100ug , Concentration: 1 mg/ml by Nanodrop;

Source:

Mouse

Isotype:

IgG2b

Immunogen Catalog Number:

AG33192

GenBank Accession Number:

BC030586

GeneID (NCBI):

8027

UNIPROT ID:

Q92783

Full Name:

signal transducing adaptor molecule (SH3 domain and ITAM motif) 1

Calculated MW:

59 kDa

Observed MW:

70 kDa

Purification Method:

Protein A purification

CloneNo.:

1F5C2

## Applications

Tested Applications:

WB, Indirect ELISA

Species Specificity:

Human, mouse, rat

## Background Information

STAM, also named as STAM1, belongs to the STAM family. It is involved in intracellular signal transduction mediated by cytokines and growth factors. Upon IL-2 and GM-CSF stimulation, it plays a role in signaling leading to DNA synthesis and MYC induction. STAM may also play a role in T-cell development. It is involved in down-regulation of receptor tyrosine kinase via multivesicular body (MVBs). Together with HRS, STAM forms ESCRT-0. STAM was originally identified as an adaptor protein involved in cytokine signaling.(PMID:20505072)

## Storage

Storage:

Store at -80°C.

Storage Buffer:

PBS Only

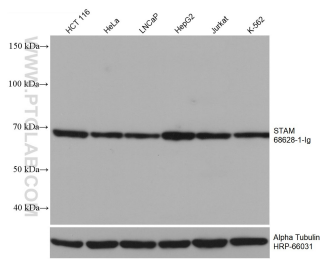
For technical support and original validation data for this product please contact:

T: 1 (888) 4PTGLAB (1-888-478-4522) (toll free in USA), or 1(312) 455-8498 (outside USA)

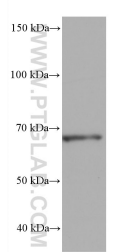
E: [proteintech@ptglab.com](mailto:proteintech@ptglab.com)  
W: [ptglab.com](http://ptglab.com)

This product is exclusively available under Proteintech Group brand and is not available to purchase from any other manufacturer.

## Selected Validation Data



Various lysates were subjected to SDS PAGE followed by western blot with 68628-1-Ig (STAM antibody) at dilution of 1:10000 incubated at room temperature for 1.5 hours. The membrane was stripped and reblotted with HRP-conjugated Alpha Tubulin Monoclonal antibody (HRP-66031) as loading control. This data was developed using the same antibody clone with 68628-1-PBS in a different storage buffer formulation.



RAW 264.7 cells were subjected to SDS PAGE followed by western blot with 68628-1-Ig (STAM antibody) at dilution of 1:10000 incubated at room temperature for 1.5 hours. This data was developed using the same antibody clone with 68628-1-PBS in a different storage buffer formulation.