

For Research Use Only

C22orf25 Monoclonal antibody, PBS Only



Catalog Number: 68625-1-PBS

Basic Information

Catalog Number:

68625-1-PBS

Size:

100ug, Concentration: 1 mg/ml by Nanodrop;

Source:

Mouse

Isotype:

IgG1

Immunogen Catalog Number:

AG27127

GenBank Accession Number:

BC041339

GeneID (NCBI):

128989

UNIPROT ID:

Q6ICL3

Full Name:

chromosome 22 open reading frame 25

Observed MW:

30-34 kDa

Purification Method:

Protein G purification

CloneNo.:

2G5B8

Applications

Tested Applications:

WB, Indirect ELISA

Species Specificity:

Human

Storage

Storage:

Store at -80°C.

Storage Buffer:

PBS Only

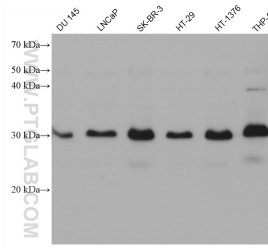
For technical support and original validation data for this product please contact:

T: 1 (888) 4PTGLAB (1-888-478-4522) (toll free in USA), or 1(312) 455-8498 (outside USA)

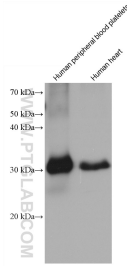
E: proteintech@ptglab.com
W: ptglab.com

This product is exclusively available under Proteintech Group brand and is not available to purchase from any other manufacturer.

Selected Validation Data



Various lysates were subjected to SDS PAGE followed by western blot with 68625-1-Ig (C22orf25 antibody) at dilution of 1:5000 incubated at room temperature for 1.5 hours. This data was developed using the same antibody clone with 68625-1-PBS in a different storage buffer formulation.



Various lysates were subjected to SDS PAGE followed by western blot with 68625-1-Ig (C22orf25 antibody) at dilution of 1:5000 incubated at room temperature for 1.5 hours. This data was developed using the same antibody clone with 68625-1-PBS in a different storage buffer formulation.