

For Research Use Only

# SPIN1 Monoclonal antibody, PBS Only



Catalog Number: 68615-1-PBS

## Basic Information

<b>Catalog Number:</b> 68615-1-PBS	<b>GenBank Accession Number:</b> BC013571	<b>Purification Method:</b> Protein G purification
<b>Size:</b> 100ug , Concentration: 1 mg/ml by Nanodrop;	<b>GeneID (NCBI):</b> 10927	<b>CloneNo.:</b> 1G8C5
<b>Source:</b> Mouse	<b>UNIPROT ID:</b> Q9Y657	
<b>Isotype:</b> IgG1	<b>Full Name:</b> spindlin 1	
<b>Immunogen Catalog Number:</b> AG33686	<b>Calculated MW:</b> 262 aa, 30 kDa	
	<b>Observed MW:</b> 30 kDa	

## Applications

**Tested Applications:**  
WB, Indirect ELISA

**Species Specificity:**  
Human, mouse, rat, rabbit

## Background Information

SPIN1 (Spindlin 1) is a histone methylation reader, which recognizes trimethylated histone H3 lysine 4 through the protein-protein interaction. SPIN1 was initially found in ovarian cancer via searching ovarian cancer-related genes. It is overexpressed in ovarian cancer tissue, which exhibits a high homology to mouse Spin (Spindlin) gene. Signaling pathways responsible for SPIN1 functions include PI3K/Akt, Wnt and RET that are highly relevant to tumorigenesis.(PMID: 34492335, PMID: 31790762)

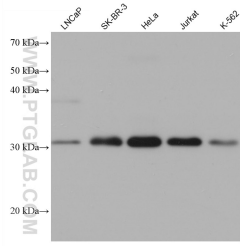
## Storage

**Storage:**  
Store at -80°C.  
**Storage Buffer:**  
PBS Only

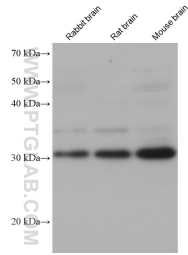
For technical support and original validation data for this product please contact:  
T: 1 (888) 4PTGLAB (1-888-478-4522) (toll free in USA), or 1(312) 455-8498 (outside USA)      E: proteintech@ptglab.com  
W: ptglab.com

This product is exclusively available under Proteintech Group brand and is not available to purchase from any other manufacturer.

## Selected Validation Data



Various lysates were subjected to SDS PAGE followed by western blot with 68615-1-Ig (SPIN1 antibody) at dilution of 1:20000 incubated at room temperature for 1.5 hours. This data was developed using the same antibody clone with 68615-1-PBS in a different storage buffer formulation.



Various lysates were subjected to SDS PAGE followed by western blot with 68615-1-Ig (SPIN1 antibody) at dilution of 1:20000 incubated at room temperature for 1.5 hours. This data was developed using the same antibody clone with 68615-1-PBS in a different storage buffer formulation.