

For Research Use Only

GABRG2 Monoclonal antibody, PBS Only

Catalog Number: 68595-1-PBS



Basic Information

Catalog Number: 68595-1-PBS	GenBank Accession Number: BC059389	Purification Method: Protein A purification
Size: 100ug, Concentration: 1mg/ml by Nanodrop;	GeneID (NCBI): 2566	CloneNo.: 1H10E1
Source: Mouse	UNIPROT ID: P18507	
Isotype: IgG2a	Full Name: gamma-aminobutyric acid (GABA) A receptor, gamma 2	
Immunogen Catalog Number: AG5489	Calculated MW: 467 aa, 54 kDa	
	Observed MW: 40-54 kDa	

Applications

Tested Applications:
WB, Indirect ELISA

Species Specificity:
human, mouse, rat, rabbit

Background Information

GABRG2 (gamma-aminobutyric acid type A receptor subunit gamma2), which is expected to be located in cell membrane and expressed in brain and retina. The calculated molecular weight of the protein is 54 kDa. This antibody can recognize the 43 kDa band of target (PMID:12091434). And it also has glycosylation modification. GABA is the major inhibitory neurotransmitter in the mammalian brain, where it acts at GABA-A receptors, which are ligand-gated chloride channels. GABA-A receptors are pentameric, consisting of proteins from several subunit classes: alpha, beta, gamma, delta and rho. Mutations in this gene have been associated with epilepsy and febrile seizures.

Storage

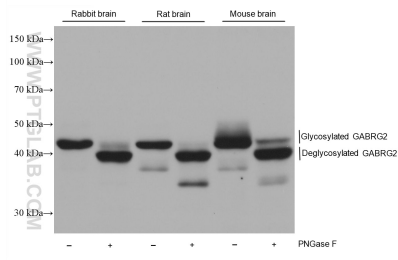
Storage:
Store at -80°C.

Storage Buffer:
PBS Only

For technical support and original validation data for this product please contact:
T: 1 (888) 4PTGLAB (1-888-478-4522) (toll free in USA), or 1(312) 455-8498 (outside USA) E: proteintech@ptglab.com
W: ptglab.com

This product is exclusively available under Proteintech Group brand and is not available to purchase from any other manufacturer.

Selected Validation Data



Various lysates were subjected to SDS PAGE followed by western blot with 68595-1-Ig (GABRG2 antibody) at dilution of 1:10000 incubated at room temperature for 1.5 hours. This data was developed using the same antibody clone with 68595-1-PBS in a different storage buffer formulation.