

For Research Use Only

LEO1 Monoclonal antibody, PBS Only



Catalog Number: 68568-1-PBS

Basic Information

Catalog Number: 68568-1-PBS	GenBank Accession Number: BC018147	Purification Method: Protein G purification
Size: 100ug , Concentration: 1 mg/ml by Nanodrop;	GeneID (NCBI): 123169	CloneNo.: 3D7A2
Source: Mouse	UNIPROT ID: Q8WVCO	
Isotype: IgG1	Full Name: Leo1, Paf1/RNA polymerase II complex component, homolog (S. cerevisiae)	
Immunogen Catalog Number: AG33577	Calculated MW: 666 aa, 75 kDa	
	Observed MW: 105 kDa	

Applications

Tested Applications:
WB, Indirect ELISA

Species Specificity:
Human

Background Information

LEO1, also named as RNA polymerase-associated protein LEO1, is a 666 amino acid protein, which belongs to the LEO1 family. LEO1 is a component of the PAF1 complex (PAF1C) which has multiple functions during transcription by RNA polymerase II and is implicated in regulation of development and maintenance of embryonic stem cell pluripotency. The calculated molecular weight of LEO1 is 75 kDa, but the modified LEO1 protein is about 105 kDa (PMID: 15632063).

Storage

Storage:
Store at -80°C.

Storage Buffer:
PBS Only

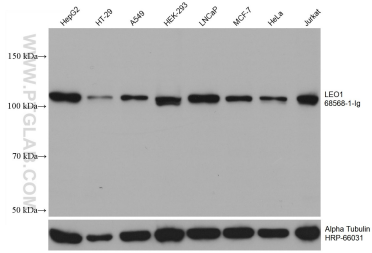
For technical support and original validation data for this product please contact:

T: 1 (888) 4PTGLAB (1-888-478-4522) (toll free in USA), or 1(312) 455-8498 (outside USA)

E: proteintech@ptglab.com
W: ptglab.com

This product is exclusively available under Proteintech Group brand and is not available to purchase from any other manufacturer.

Selected Validation Data



Various lysates were subjected to SDS PAGE followed by western blot with 68568-1-Ig (LEO1 antibody) at dilution of 1:10000 incubated at room temperature for 1.5 hours. The membrane was stripped and reblotted with HRP-conjugated Alpha Tubulin Monoclonal antibody (HRP-66031) as loading control. This data was developed using the same antibody clone with 68568-1-PBS in a different storage buffer formulation.