

For Research Use Only

# TBC1D24 Monoclonal antibody, PBS Only



Catalog Number: 68566-1-PBS

## Basic Information

<b>Catalog Number:</b> 68566-1-PBS	<b>GenBank Accession Number:</b> BC127015	<b>Purification Method:</b> Protein G purification
<b>Size:</b> 100ug, Concentration: 1 mg/ml by Nanodrop;	<b>GeneID (NCBI):</b> 57465	<b>CloneNo.:</b> 1C7C4
<b>Source:</b> Mouse	<b>UNIPROT ID:</b> Q9ULP9	
<b>Isotype:</b> IgG1	<b>Full Name:</b> TBC1 domain family, member 24	
<b>Immunogen Catalog Number:</b> AG19380	<b>Calculated MW:</b> 559 aa, 63 kDa	
	<b>Observed MW:</b> 63 kDa	

## Applications

**Tested Applications:**  
WB, Indirect ELISA

**Species Specificity:**  
Human, rat, mouse

## Background Information

TBC1D24 is a protein with a conserved domain, referred to as the TBC domain, characteristic of proteins which interact with GTPases. TBC domain proteins may serve as GTPase-activating proteins for a particular group of GTPases, the Rab (Ras-related proteins in brain) small GTPases which are involved in the regulation of membrane trafficking. Mutations in this gene are associated with familial infantile myoclonic epilepsy.

## Storage

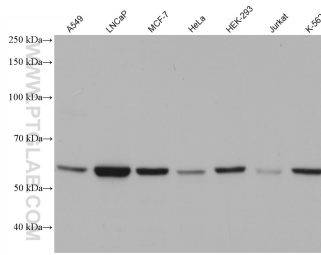
**Storage:**  
Store at -80°C.

**Storage Buffer:**  
PBS Only

For technical support and original validation data for this product please contact:  
T: 1 (888) 4PTGLAB (1-888-478-4522) (toll free in USA), or 1(312) 455-8498 (outside USA)      E: [proteintech@ptglab.com](mailto:proteintech@ptglab.com)  
W: [ptglab.com](http://ptglab.com)

This product is exclusively available under Proteintech Group brand and is not available to purchase from any other manufacturer.

## Selected Validation Data



Various lysates were subjected to SDS PAGE followed by western blot with 68566-1-Ig (TBC1D24 antibody) at dilution of 1:10000 incubated at room temperature for 1.5 hours. This data was developed using the same antibody clone with 68566-1-PBS in a different storage buffer formulation.