

For Research Use Only

# RAB35 Monoclonal antibody, PBS Only



Catalog Number: 68552-1-PBS

## Basic Information

Catalog Number:

68552-1-PBS

Size:

100ug, Concentration: 1 mg/ml by Nanodrop;

Source:

Mouse

Isotype:

IgG2a

Immunogen Catalog Number:

AG21424

GenBank Accession Number:

BC015931

GeneID (NCBI):

11021

UNIPROT ID:

Q15286

Full Name:

RAB35, member RAS oncogene family

Calculated MW:

201 aa, 23 kDa

Observed MW:

23 kDa

Purification Method:

Protein A purification

CloneNo.:

3H3E1

## Applications

Tested Applications:

WB, Indirect ELISA

Species Specificity:

Human, mouse, rat, rabbit

## Background Information

RAB35 is a member of the small GTPase superfamily. Like the other Rab proteins, RAB35 has 2 consecutive cysteine residues at its C terminus, and this region is thought to be involved in membrane association. Rab35 is found on the cell surface and endosomes, where it has been proposed to play a role in recycling of the transferrin and other receptors.

## Storage

Storage:

Store at -80°C.

Storage Buffer:

PBS Only

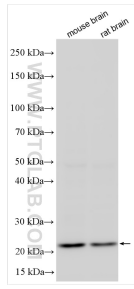
For technical support and original validation data for this product please contact:

T: 1 (888) 4PTGLAB (1-888-478-4522) (toll free in USA), or 1(312) 455-8498 (outside USA)

E: [proteintech@ptglab.com](mailto:proteintech@ptglab.com)  
W: [ptglab.com](http://ptglab.com)

This product is exclusively available under Proteintech Group brand and is not available to purchase from any other manufacturer.

## Selected Validation Data



Various lysates were subjected to SDS PAGE followed by western blot with 68552-1-Ig (RAB35 antibody) at dilution of 1:4000 incubated at room temperature for 1.5 hours. This data was developed using the same antibody clone with 68552-1-PBS in a different storage buffer formulation.