

For Research Use Only

SUCLA2 Monoclonal antibody, PBS Only

Catalog Number: 68549-1-PBS



Basic Information

Catalog Number: 68549-1-PBS	GenBank Accession Number: BC027587	Purification Method: Protein A purification
Size: 100ug, Concentration: 1mg/ml by Nanodrop;	GeneID (NCBI): 8803	CloneNo.: 2C7E4
Source: Mouse	UNIPROT ID: Q9P2R7	
Isotype: IgG2b	Full Name: succinate-CoA ligase, ADP-forming, beta subunit	
Immunogen Catalog Number: AG17967	Calculated MW: 463 aa, 50 kDa	
	Observed MW: 48-50 kDa	

Applications

Tested Applications:
WB, IHC, IF/ICC, Indirect ELISA

Species Specificity:
human, mouse

Background Information

SUCLA2, β subunit of succinate-CoA ligase, contributes to energy production in mitochondria through the succinate-CoA ligase enzyme. Succinate-CoA ligase catalyses the reversible conversion of succinyl-CoA and ADP or GDP to succinate and ATP or GTP. SUCLA2 mutations cause global protein succinylation and mitochondrial DNA depletion (PMID: 33230181, PMID: 20301762). Mutations in SUCLA2 are also associated with SUCLA2-related mitochondrial DNA depletion syndrome, Leigh syndrome, down syndrome (PMID: 23010432).

Storage

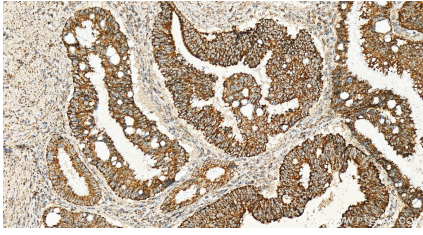
Storage:
Store at -80°C .

Storage Buffer:
PBS Only

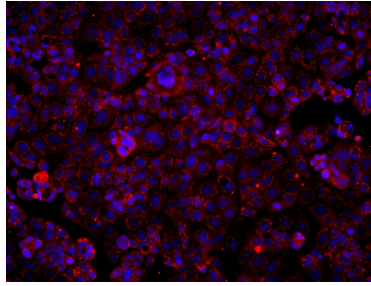
For technical support and original validation data for this product please contact:
T: 1 (888) 4PTGLAB (1-888-478-4522) (toll free in USA), or 1(312) 455-8498 (outside USA) E: proteintech@ptglab.com W: ptglab.com

This product is exclusively available under Proteintech Group brand and is not available to purchase from any other manufacturer.

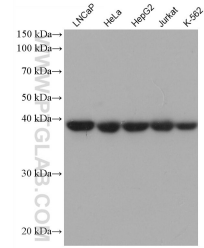
Selected Validation Data



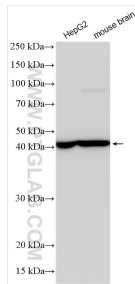
Immunohistochemical analysis of paraffin-embedded human colon cancer tissue slide using 68549-1-Ig (SUCLA2 antibody) at dilution of 1:1000 (under 20x lens). Heat mediated antigen retrieval with Tris-EDTA buffer (pH 9.0). This data was developed using the same antibody clone with 68549-1-PBS in a different storage buffer formulation.



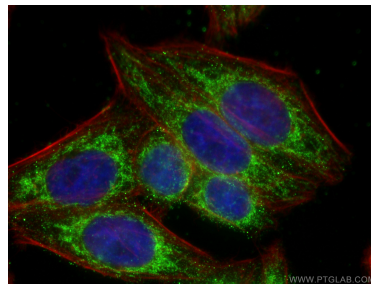
Immunofluorescent analysis of (4% PFA) fixed Caco-2 cells using SUCLA2 antibody (68549-1-Ig, Clone: 2C7E4) at dilution of 1:1000 and Multi-rAb CoraLite® Plus 594-Goat Anti-Mouse Recombinant Secondary Antibody (H+L) (Cat.NO. RGAM004). This data was developed using the same antibody clone with 68549-1-PBS in a different storage buffer formulation.



Various lysates were subjected to SDS PAGE followed by western blot with 68549-1-Ig (SUCLA2 antibody) at dilution of 1:9900 incubated at room temperature for 1.5 hours. This data was developed using the same antibody clone with 68549-1-PBS in a different storage buffer formulation.



Various lysates were subjected to SDS PAGE followed by western blot with 68549-1-Ig (SUCLA2 antibody) at dilution of 1:8000 incubated at room temperature for 1.5 hours. This data was developed using the same antibody clone with 68549-1-PBS in a different storage buffer formulation.



Immunofluorescent analysis of (4% PFA) fixed HepG2 cells using SUCLA2 antibody (68549-1-Ig, Clone: 2C7E4) at dilution of 1:800 and Multi-rAb CoraLite® Plus 488-Goat Anti-Mouse Recombinant Secondary Antibody (H+L) (RGAM002), CL594-phalloidin (red). This data was developed using the same antibody clone with 68549-1-PBS in a different storage buffer formulation.