

For Research Use Only

# RPAIN Monoclonal antibody, PBS Only



Catalog Number: 68546-1-PBS

## Basic Information

|  |  |   |
|--|--|---|
| <b>Catalog Number:</b><br>68546-1-PBS                      | <b>GenBank Accession Number:</b><br>BC004451 | <b>Purification Method:</b><br>Protein G purification |
| <b>Size:</b><br>100ug, Concentration: 1 mg/ml by Nanodrop; | <b>GeneID (NCBI):</b><br>84268               | <b>CloneNo.:</b><br>2D8E3                             |
| <b>Source:</b><br>Mouse                                    | <b>UNIPROT ID:</b><br>Q86UA6                 |   |
| <b>Isotype:</b><br>IgG1                                    | <b>Full Name:</b><br>RPA interacting protein |   |
| <b>Immunogen Catalog Number:</b><br>AG7844                 | <b>Calculated MW:</b><br>25 kDa              |   |
|  | <b>Observed MW:</b><br>25 kDa                |   |

## Applications

**Tested Applications:**  
WB, Indirect ELISA

**Species Specificity:**  
Human

## Background Information

Replication protein A (RPA) is a eukaryotic single-stranded DNA binding protein that is essential for DNA replication, repair, and recombination, and human RPA interacting protein  $\alpha$  (hRIP $\alpha$ ) is the nuclear transporter of RPA. RPAIN was originally identified as a nuclear transporter of RPA in *Xenopus* (PMID: 23010595). The human RPA gene encodes several splice isoforms, of which hRIP $\alpha$  and hRIP $\beta$  are the major translation products in vivo. hRIP $\alpha$  transports RPA into the nucleus by shuttling between the cytoplasm and nucleus while hRIP $\beta$  is localized in promyelocytic leukemia (PML) nuclear bodies.

## Storage

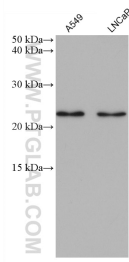
**Storage:**  
Store at -80°C.

**Storage Buffer:**  
PBS Only

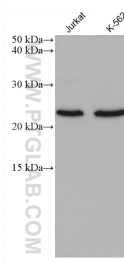
For technical support and original validation data for this product please contact:  
T: 1 (888) 4PTGLAB (1-888-478-4522) (toll free in USA), or 1(312) 455-8498 (outside USA)      E: proteintech@ptglab.com  
W: ptglab.com

This product is exclusively available under Proteintech Group brand and is not available to purchase from any other manufacturer.

## Selected Validation Data



Various lysates were subjected to SDS PAGE followed by western blot with 68546-1-Ig (RPAIN antibody) at dilution of 1:5000 incubated at room temperature for 1.5 hours. This data was developed using the same antibody clone with 68546-1-PBS in a different storage buffer formulation.



Various lysates were subjected to SDS PAGE followed by western blot with 68546-1-Ig (RPAIN antibody) at dilution of 1:5000 incubated at room temperature for 1.5 hours. This data was developed using the same antibody clone with 68546-1-PBS in a different storage buffer formulation.