

For Research Use Only

SLC1A5/ASCT2 Monoclonal antibody, PBS Only



Catalog Number: 68540-1-PBS

Basic Information

| | | |
|--|--|---|
| Catalog Number: 68540-1-PBS | GenBank Accession Number: BC000062 | Purification Method: Protein G purification |
| Size: 100ug, Concentration: 1mg/ml by Nanodrop; | GeneID (NCBI): 6510 | CloneNo.: 1C4E1 |
| Source: Mouse | UNIPROT ID: Q15758 | |
| Isotype: IgG1 | Full Name: solute carrier family 1 (neutral amino acid transporter), member 5 | |
| Immunogen Catalog Number: AG16837 | Calculated MW: 541 aa, 57 kDa | |
| | Observed MW: 55-70 kDa | |

Applications

Tested Applications:
Indirect ELISA, IF/ICC, IHC, WB

Species Specificity:
human

Background Information

SLC1A5 (Solute Carrier Family 1, member 5), also named as ASCT2, a major glutamine transporter belonging to the SLC1 family and localized in the plasma membrane of several body districts. Consistent with the functions exerted by glutamine, SLC1A5 is involved in uptake of essential amino acids, activation of mTORC1 and glutamine-dependent tumor cell survival and growth. SLC1A5 is highly expressed in various malignancies and plays a critical role in the transformation, growth and survival of cancer cells (PMID: 30234109). High SLC1A5 expression is associated with poor prognosis in clear-cell renal cell carcinoma (PMID: 26599282).

Storage

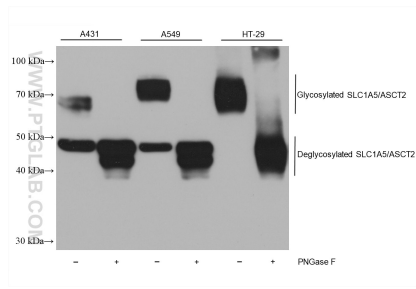
Storage:
Store at -80°C.

Storage Buffer:
PBS Only

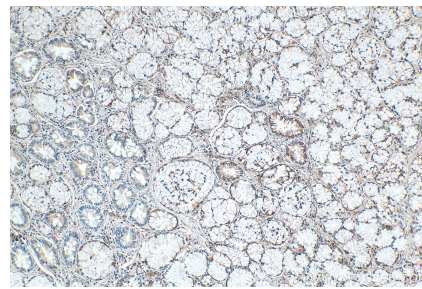
For technical support and original validation data for this product please contact:
T: 1 (888) 4PTGLAB (1-888-478-4522) (toll free in USA), or 1(312) 455-8498 (outside USA) E: proteintech@ptglab.com
W: ptglab.com

This product is exclusively available under Proteintech Group brand and is not available to purchase from any other manufacturer.

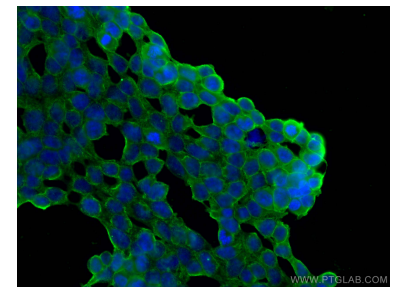
Selected Validation Data



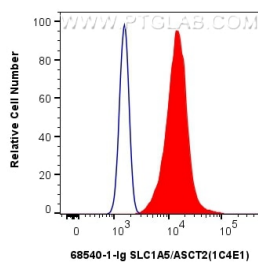
Various lysates were subjected to SDS PAGE followed by western blot with 68540-1-Ig (SLC1A5/ASCT2 antibody) at dilution of 1:10000 incubated at room temperature for 1.5 hours. This data was developed using the same antibody clone with 68540-1-PBS in a different storage buffer formulation.



Immunohistochemical analysis of paraffin-embedded human stomach cancer tissue slide using 68540-1-Ig (RDRC antibody) at dilution of 1:2000 (under 10x Lens). Heat mediated antigen retrieval with Tris-EDTA buffer (pH 9.0). This data was developed using the same antibody clone with 68540-1-PBS in a different storage buffer formulation.



Immunofluorescent analysis of (-20°C Methanol) fixed HEK-293 cells using SLC1A5/ASCT2 antibody (68540-1-Ig, Clone: 1C4E1) at dilution of 1:400 and CoraLite®488-Conjugated AffiniPure Goat Anti-Mouse IgG(H+L) (SA00013-1). This data was developed using the same antibody clone with 68540-1-PBS in a different storage buffer formulation.



1X10⁶ HeLa cells were intracellularly stained with 0.4 ug Anti-Human SLC1A5/ASCT2 (68540-1-Ig, Clone:1C4E1) and CoraLite®488-Conjugated AffiniPure Goat Anti-Mouse IgG(H+L) at dilution 1:1000 (red), or 0.4 ug Mouse IgG1 Isotype Control (MOPC-21) (65124-1-Ig, Clone: MOPC-21) (blue). Cells were fixed with 4% PFA and permeabilized with Flow Cytometry Perm Buffer (PF00011-C). This data was developed using the same antibody clone with 68540-1-

