

For Research Use Only

N-cadherin Monoclonal antibody, PBS Only (Detector)

Catalog Number: 68532-2-PBS



Basic Information

| | | |
|--|--|---|
| Catalog Number: 68532-2-PBS | GenBank Accession Number: NM_001792.4 | Purification Method: Protein G purification |
| Size: 100ug, Concentration: 1 mg/ml by Nanodrop; | GeneID (NCBI): 1000 | CloneNo.: 2D9G1 |
| Source: Mouse | UNIPROT ID: P19022-1 | |
| Isotype: IgG1 | Full Name: cadherin 2, type 1, N-cadherin (neuronal) | |
| | Calculated MW: 100 kDa | |
| | Observed MW: 130 kDa | |

Applications

Tested Applications:
WB, IF/ICC, FC, Cytometric bead array, Indirect ELISA

Species Specificity:
human, mouse, rat, pig, rabbit

Product Information

68532-2-PBS targets N-cadherin as part of a matched antibody pair.

MP50439-1: 66219-2-PBS capture and 68532-2-PBS detection (validated in Cytometric bead array)

Unconjugated mouse monoclonal antibody pair in PBS only (BSA and azide free) storage buffer at a concentration of 1 mg/mL, ready for conjugation.

This conjugation ready format makes antibodies ideal for use in many applications including: ELISAs, multiplex assays requiring matched pairs, mass cytometry, and multiplex imaging applications. Antibody use should be optimized by the end user for each application and assay.

Background Information

Cadherins are a family of transmembrane glycoproteins that mediate calcium-dependent cell-cell adhesion and play an important role in the maintenance of normal tissue architecture. N-cadherin (neural cadherin), also known as CDH2 (cadherin 2), is a 130-kDa transmembrane protein and a classical member of the cadherin superfamily which also include E-, P-, R-, and B-cadherins. Expression of N-cadherin has been reported on various cell types including neurons, endothelial cells and cardiac myocytes (PMID: 11282032; 9508779; 8125202). N-cadherin has functions in early brain morphogenesis, synaptogenesis and synaptic plasticity (PMID: 23321619). The N-cadherin ectodomain can be cleaved, leading to the generation of a 90 kD N-terminal fragment (PMID: 16998833; 17028923).

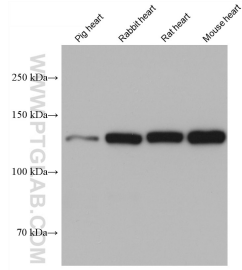
Storage

Storage:
Store at -80°C.
Storage Buffer:
PBS Only

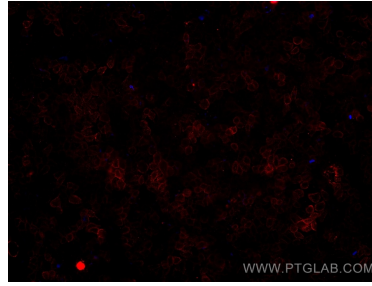
For technical support and original validation data for this product please contact:
T: 1 (888) 4PTGLAB (1-888-478-4522) (toll free in USA), or 1(312) 455-8498 (outside USA) E: proteintech@ptglab.com
W: ptglab.com

This product is exclusively available under Proteintech Group brand and is not available to purchase from any other manufacturer.

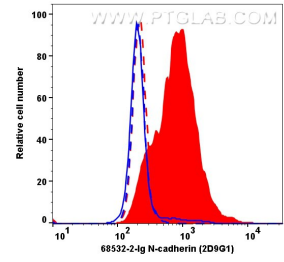
Selected Validation Data



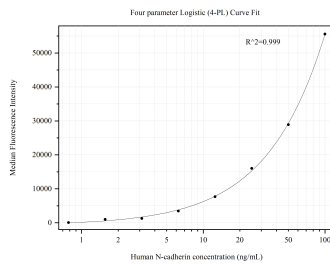
Various lysates were subjected to SDS PAGE followed by western blot with 68532-2-Ig (N-cadherin antibody) at dilution of 1:10000 incubated at room temperature for 1.5 hours. This data was developed using the same antibody clone with 68532-2-PBS in a different storage buffer formulation.



Immunofluorescent analysis of un-fixed HepG2 cells using N-cadherin antibody (68532-2-Ig, Clone: 2D9G1) at dilution of 1:500 and Multi-rAb CoraLite® Plus 594-Goat Anti-Mouse Recombinant Secondary Antibody (H+L) (Cat.NO. RGAM004). This data was developed using the same antibody clone with 68532-2-PBS in a different storage buffer formulation.



1×10^6 MCF-7 (red, dashed) and SH-SY5Y (red, filled) were surface stained with $0.2 \mu\text{g}$ N-cadherin Monoclonal antibody (68532-2-Ig, Clone: 2D9G1) and CoraLite® Plus 647-Goat Anti-Mouse Recombinant Secondary Antibody (H+L) (Cat.NO. RGAM005). Mouse IgG1 isotype control (66360-1-Ig, Clone: 1F8D3, blue) was parallel stained as control. Cells were not fixed. This data was developed using the same antibody clone with 68532-2-PBS in a different storage buffer formulation.



Cytometric bead array standard curve of MP50439-1, N-cadherin Monoclonal Matched Antibody Pair, PBS Only. Capture antibody: 66219-2-PBS. Detection antibody: 68532-2-PBS. Standard: Eg0701. Range: 0.781-100 ng/mL.