

For Research Use Only

# CAMK2G Monoclonal antibody, PBS Only

Catalog Number: 68519-1-PBS



## Basic Information

<b>Catalog Number:</b> 68519-1-PBS	<b>GenBank Accession Number:</b> BC034044	<b>Purification Method:</b> Protein A purification
<b>Size:</b> 100ug, Concentration: 1mg/ml by Nanodrop;	<b>GeneID (NCBI):</b> 818	<b>CloneNo.:</b> 1C12H10
<b>Source:</b> Mouse	<b>UNIPROT ID:</b> Q13555	
<b>Isotype:</b> IgG1	<b>Full Name:</b> calcium/calmodulin-dependent protein kinase II gamma	
<b>Immunogen Catalog Number:</b> AG23180	<b>Calculated MW:</b> 527 aa, 59 kDa	
	<b>Observed MW:</b> 64 kDa	

## Applications

**Tested Applications:**  
WB, Indirect ELISA

**Species Specificity:**  
human, mouse, rat, pig, rabbit

## Background Information

CaMKII gamma, also named CAMKG or CAMK2G, belongs to the protein kinase superfamily, CAMK Ser/Thr protein kinase family, and CaMK subfamily. CAMK2 is a prominent kinase in the central nervous system that may function in long-term potentiation and neurotransmitter release. CAMK2G is expressed in human beta cells as a candidate gene for Type II (non-insulin-dependent) diabetes mellitus. Some studies can be used to assess the role of CAMK2G in the susceptibility to Type II diabetes (PMID: 12032636). CAMK2G has some isoforms with the MW of 55-66 kDa and this antibody can recognize all the isoforms of CAMK2G. This antibody may have cross-reaction with CAMK2A/B/D due to the high homology.

## Storage

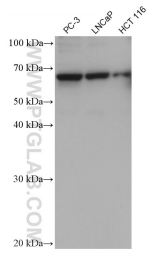
**Storage:**  
Store at -80°C.

**Storage Buffer:**  
PBS Only

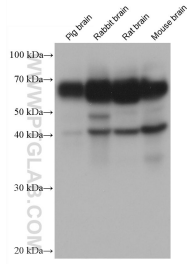
For technical support and original validation data for this product please contact:  
T: 1 (888) 4PTGLAB (1-888-478-4522) (toll free in USA), or 1(312) 455-8498 (outside USA)      E: proteintech@ptglab.com  
W: ptglab.com

This product is exclusively available under Proteintech Group brand and is not available to purchase from any other manufacturer.

## Selected Validation Data



Various lysates were subjected to SDS PAGE followed by western blot with 68519-1-Ig (CAMK2G antibody) at dilution of 1:10000 incubated at room temperature for 1.5 hours. This data was developed using the same antibody clone with 68519-1-PBS in a different storage buffer formulation.



Various lysates were subjected to SDS PAGE followed by western blot with 68519-1-Ig (CAMK2G antibody) at dilution of 1:10000 incubated at room temperature for 1.5 hours. This data was developed using the same antibody clone with 68519-1-PBS in a different storage buffer formulation.