

For Research Use Only

ATP6V0D1 Monoclonal antibody, PBS Only



Catalog Number: 68506-1-PBS

Basic Information

Catalog Number: 68506-1-PBS	GenBank Accession Number: BC008861	Purification Method: Protein G purification
Size: 100ug , Concentration: 1 mg/ml by Nanodrop;	GeneID (NCBI): 9114	CloneNo.: 1G7A12
Source: Mouse	UNIPROT ID: P61421	
Isotype: IgG1	Full Name: ATPase, H+ transporting, lysosomal 38kDa, VO subunit d1	
Immunogen Catalog Number: AG13012	Calculated MW: 351 aa, 40 kDa	
	Observed MW: 37-41 kDa	

Applications

Tested Applications:
WB, IP, IF, IHC, Indirect ELISA

Species Specificity:
Human, Mouse, Rat, Pig, Rabbit, Chicken, Zebrafish

Background Information

ATP6V0D1(V-type proton ATPase subunit d 1) is also named as ATP6D, VPATPD and belongs to the V-ATPase V0D/AC39 subunit family. It is responsible for acidifying a variety of intracellular compartments in eukaryotic cells, thus providing most of the energy required for transport processes in the vacuolar system.

Storage

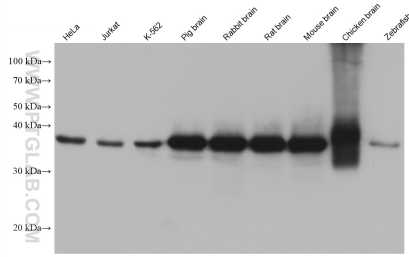
Storage:
Store at -80°C.

Storage Buffer:
PBS Only

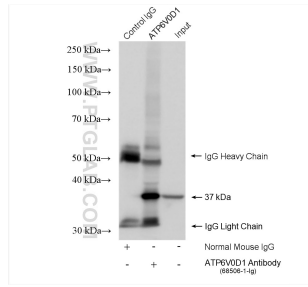
For technical support and original validation data for this product please contact:
T: 1 (888) 4PTGLAB (1-888-478-4522) (toll free in USA), or 1(312) 455-8498 (outside USA) E: proteintech@ptglab.com
W: ptglab.com

This product is exclusively available under Proteintech Group brand and is not available to purchase from any other manufacturer.

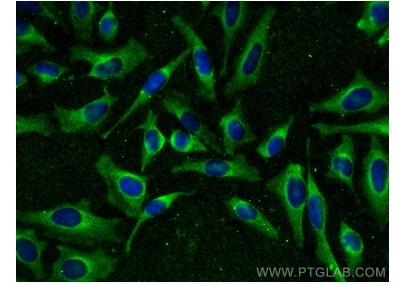
Selected Validation Data



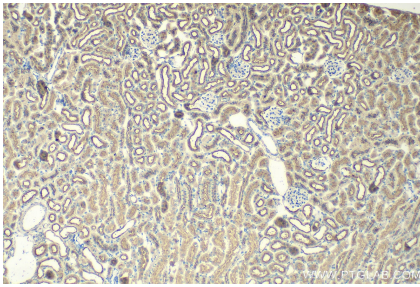
Various lysates were subjected to SDS PAGE followed by western blot with 68506-1-Ig (ATP6VOD1 antibody) at dilution of 1:10000 incubated at room temperature for 1.5 hours. This data was developed using the same antibody clone with 68506-1-PBS in a different storage buffer formulation.



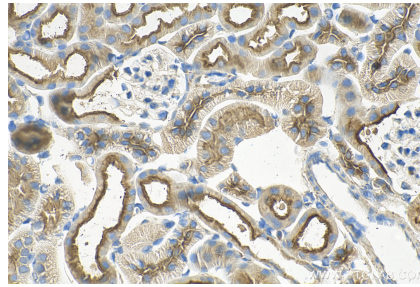
IP result of anti-ATP6VOD1 (IP:68506-1-Ig, 4ug; Detection:68506-1-Ig 1:3000) with HeLa cells lysate 1520 ug. This data was developed using the same antibody clone with 68506-1-PBS in a different storage buffer formulation.



Immunofluorescent analysis of (-20°C Methanol) fixed HeLa cells using ATP6VOD1 antibody (68506-1-Ig, Clone: 1G7A12) at dilution of 1:2400 and CoraLite@488-Conjugated AffiniPure Goat Anti-Mouse IgG(H+L). This data was developed using the same antibody clone with 68506-1-PBS in a different storage buffer formulation.



Immunohistochemical analysis of paraffin-embedded mouse kidney tissue slide using 68506-1-Ig (ATP6VOD1 antibody) at dilution of 1:500 (under 10x lens). Heat mediated antigen retrieval with Tris-EDTA buffer (pH 9.0). This data was developed using the same antibody clone with 68506-1-PBS in a different storage buffer formulation.



Immunohistochemical analysis of paraffin-embedded mouse kidney tissue slide using 68506-1-Ig (ATP6VOD1 antibody) at dilution of 1:500 (under 40x lens). Heat mediated antigen retrieval with Tris-EDTA buffer (pH 9.0). This data was developed using the same antibody clone with 68506-1-PBS in a different storage buffer formulation.