

For Research Use Only

ATP1A2 Monoclonal antibody, PBS Only (Capture)

Catalog Number: 68505-2-PBS



Basic Information

Catalog Number: 68505-2-PBS	GenBank Accession Number: BC052271	Purification Method: Protein G purification
Size: 100ug, Concentration: 1 mg/ml by Nanodrop;	GeneID (NCBI): 477	CloneNo.: 1F5C2
Source: Mouse	UNIPROT ID: P50993	
Isotype: IgG1	Full Name: ATPase, Na ⁺ /K ⁺ transporting, alpha 2 (+) polypeptide	
Immunogen Catalog Number: AG10489	Calculated MW: 1020 aa, 112 kDa	

Applications

Tested Applications:
Cytometric bead array, Indirect ELISA

Species Specificity:
human

Product Information

68505-2-PBS targets ATP1A2 as part of a matched antibody pair:

MP50523-1: 68505-2-PBS capture and 68504-2-PBS detection (validated in Cytometric bead array)

MP50523-2: 68505-2-PBS capture and 68504-1-PBS detection (validated in Cytometric bead array)

Unconjugated mouse monoclonal antibody pair in PBS only (BSA and azide free) storage buffer at a concentration of 1 mg/mL, ready for conjugation.

This conjugation ready format makes antibodies ideal for use in many applications including: ELISAs, multiplex assays requiring matched pairs, mass cytometry, and multiplex imaging applications. Antibody use should be optimized by the end user for each application and assay.

Storage

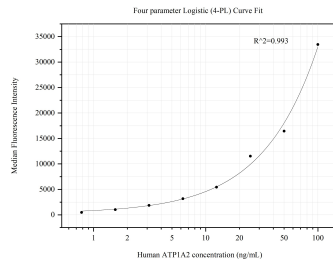
Storage:
Store at -80°C.

Storage Buffer:
PBS Only

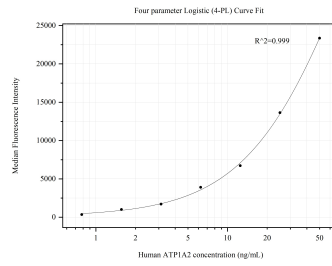
For technical support and original validation data for this product please contact:
T: 1 (888) 4PTGLAB (1-888-478-4522) (toll free in USA), or 1(312) 455-8498 (outside USA) E: proteintech@ptglab.com
W: ptglab.com

This product is exclusively available under Proteintech Group brand and is not available to purchase from any other manufacturer.

Selected Validation Data



Cytometric bead array standard curve of MP50523-1, ATP1A2 Monoclonal Matched Antibody Pair, PBS Only. Capture antibody: 68505-2-PBS. Detection antibody: 68504-2-PBS. Standard: Ag10489. Range: 0.781-100 ng/mL.



Cytometric bead array standard curve of MP50523-2, ATP1A2 Monoclonal Matched Antibody Pair, PBS Only. Capture antibody: 68505-2-PBS. Detection antibody: 68504-1-PBS. Standard: Ag10489. Range: 0.781-50 ng/mL.