

For Research Use Only

METTL1 Monoclonal antibody, PBS Only



Catalog Number: 68501-1-PBS

Basic Information

Catalog Number: 68501-1-PBS	GenBank Accession Number: BC000550	Purification Method: Protein A purification
Size: 100ug , Concentration: 1 mg/ml by Nanodrop;	GeneID (NCBI): 4234	CloneNo.: 2C3G7
Source: Mouse	UNIPROT ID: Q9UBP6	
Isotype: IgG2a	Full Name: methyltransferase like 1	
Immunogen Catalog Number: AG7055	Calculated MW: 31 kDa	
	Observed MW: 31 kDa	

Applications

Tested Applications:
WB, ELISA

Species Specificity:
Human, mouse, pig

Background Information

METTL1 methyltransferase mediates m7G methylation within miRNAs and regulates cell migration via its catalytic activity. METTL1 can be inactivated by phosphorylation at Ser27 by protein kinase B (PKB). Overexpression of METTL1 is widely observed among human cancers. It is also crucial for the regulation of chemoresistance in cancer treatment. In addition, mutations in the human N7-methylguanosine (m7G) methyltransferase complex METTL1/WDR4 cause primordial dwarfism and brain malformation.

Storage

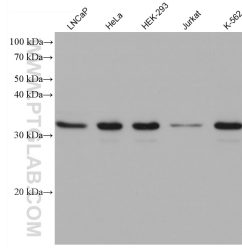
Storage:
Store at -80°C.

Storage Buffer:
PBS only

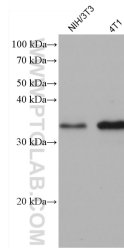
For technical support and original validation data for this product please contact:
T: 1 (888) 4PTGLAB (1-888-478-4522) (toll free in USA), or 1(312) 455-8498 (outside USA) E: proteintech@ptglab.com
W: ptglab.com

This product is exclusively available under Proteintech Group brand and is not available to purchase from any other manufacturer.

Selected Validation Data



Various lysates were subjected to SDS PAGE followed by western blot with 68501-1-Ig (METTL1 antibody) at dilution of 1:20000 incubated at room temperature for 1.5 hours. This data was developed using the same antibody clone with 68501-1-PBS in a different storage buffer formulation.



Various lysates were subjected to SDS PAGE followed by western blot with 68501-1-Ig (METTL1 antibody) at dilution of 1:20000 incubated at room temperature for 1.5 hours. This data was developed using the same antibody clone with 68501-1-PBS in a different storage buffer formulation.