

For Research Use Only

# PSPH Monoclonal antibody, PBS Only

Catalog Number: 68500-1-PBS

Featured Product



## Basic Information

**Catalog Number:**

68500-1-PBS

**Size:**

100ug, Concentration: 1 mg/ml by Nanodrop;

**Source:**

Mouse

**Isotype:**

IgG1

**Immunogen Catalog Number:**

AG6070

**GenBank Accession Number:**

BC063614

**GeneID (NCBI):**

5723

**UNIPROT ID:**

P78330

**Full Name:**

phosphoserine phosphatase

**Calculated MW:**

25 kDa

**Observed MW:**

25 kDa

**Purification Method:**

Protein A purification

**CloneNo.:**

1B12G3

## Applications

**Tested Applications:**

WB, IHC, IF/ICC, IP, ELISA

**Species Specificity:**

human, mouse, rat

## Background Information

PSPH (phosphoserine phosphatase) is an enzyme, which is involved in the process of L-serine biosynthesis. PSPH mainly plays role in multiple aspects of cell behaviours such as proliferation and differentiation by producing precursors for the biosynthesis of diverse compounds including neurotransmitters, glycolipids and thymidine (PMID: 11237721, PMID: 19963421). Additionally, augmented PSPH level is correlated with the prognosis in multiple cancers including cutaneous squamous cell carcinoma (PMID: 21726982), breast cancer (PMID: 28931725), non-small cell lung cancer (PMID: 30662358), colorectal cancer (PMID: 24146633) and hepatocellular carcinoma (PMID: 25793315).

## Storage

**Storage:**

Store at -80°C.

**Storage Buffer:**

PBS Only

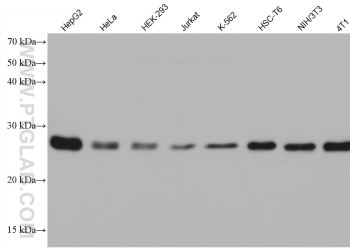
For technical support and original validation data for this product please contact:

T: 1 (888) 4PTGLAB (1-888-478-4522) (toll free in USA), or 1(312) 455-8498 (outside USA)

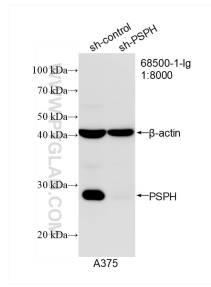
E: [proteintech@ptglab.com](mailto:proteintech@ptglab.com)  
W: [ptglab.com](http://ptglab.com)

This product is exclusively available under Proteintech Group brand and is not available to purchase from any other manufacturer.

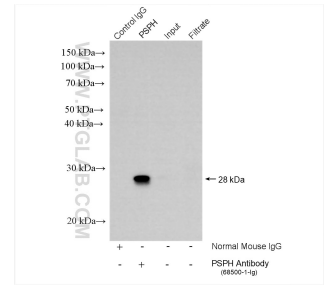
## Selected Validation Data



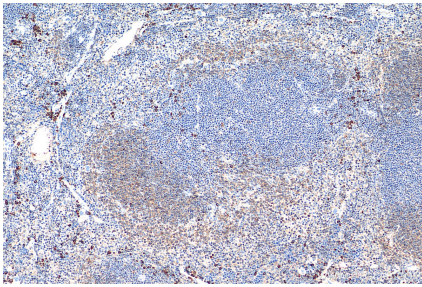
Various lysates were subjected to SDS PAGE followed by western blot with 68500-1-Ig (PSPH antibody) at dilution of 1:20000 incubated at room temperature for 1.5 hours. This data was developed using the same antibody clone with 68500-1-PBS in a different storage buffer formulation.



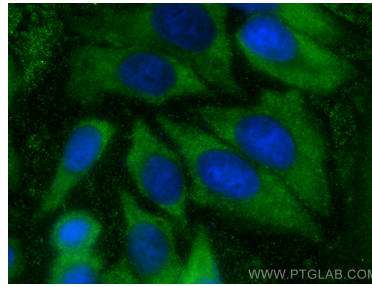
WB result of PSPH antibody (68500-1-Ig; 1:8000; incubated at room temperature for 1.5 hours) with sh-Control and sh-PSPH transfected A375 cells. This data was developed using the same antibody clone with 68500-1-PBS in a different storage buffer formulation.



IP result of anti-PSPH (IP:68500-1-Ig, 4ug; Detection:68500-1-Ig 1:5000) with HL-60 cells lysate 2440 ug. This data was developed using the same antibody clone with 68500-1-PBS in a different storage buffer formulation.



Immunohistochemical analysis of paraffin-embedded mouse spleen tissue slide using 68500-1-Ig (PSPH antibody) at dilution of 1:4000 (under 10x lens). Heat mediated antigen retrieval with Tris-EDTA buffer (pH 9.0). This data was developed using the same antibody clone with 68500-1-PBS in a different storage buffer formulation.



Immunofluorescent analysis of (-20°C Ethanol) fixed HepG2 cells using PSPH antibody (68500-1-Ig, Clone: 1B12G3 ) at dilution of 1:400 and CoralLite@488-Conjugated AffiniPure Goat Anti-Mouse IgG(H+L). This data was developed using the same antibody clone with 68500-1-PBS in a different storage buffer formulation.