

For Research Use Only

Lamin B2 Monoclonal antibody, PBS Only



Catalog Number: 68475-1-PBS

Basic Information

Catalog Number: 68475-1-PBS	GenBank Accession Number: BC006551	Purification Method: Protein G purification
Size: 100ug , Concentration: 1mg/ml by Nanodrop;	GeneID (NCBI): 84823	CloneNo.: 2C7B1
Source: Mouse	UNIPROT ID: Q03252	
Isotype: IgG1	Full Name: lamin B2	
Immunogen Catalog Number: AG33296	Calculated MW: 68 kDa	
	Observed MW: 68 kDa	

Applications

Tested Applications:
Indirect ELISA, IF/ICC, WB

Species Specificity:
rat, mouse, human

Background Information

Lamins are nuclear membrane structural components that are important in structural integrity of the nucleus and may also interact with chromatin (PMID: 33033404). Research studies show that lamin B2 knockout mice exhibit neuronal developmental defects and that both proteins are essential for typical brain development (PMID: 20145110). Mutations in Lamin B2 can result in a susceptibility to developing acquired partial lipodystrophy, a rare disorder characterized by the progressive loss of subcutaneous fat in a bilaterally symmetrical fashion (PMID: 16826530).

Storage

Storage:
Store at -80°C.

Storage Buffer:
PBS Only

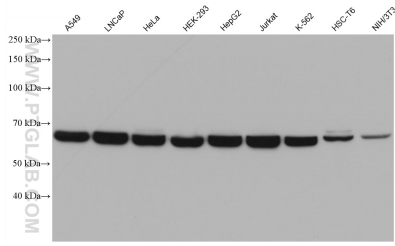
For technical support and original validation data for this product please contact:

T: 1 (888) 4PTGLAB (1-888-478-4522) (toll free in USA), or 1(312) 455-8498 (outside USA)

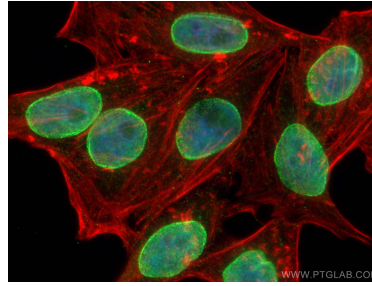
E: proteintech@ptglab.com
W: ptglab.com

This product is exclusively available under Proteintech Group brand and is not available to purchase from any other manufacturer.

Selected Validation Data



Various lysates were subjected to SDS PAGE followed by western blot with 68475-1-Ig (Lamin B2 antibody) at dilution of 1:20000 incubated at room temperature for 1.5 hours. This data was developed using the same antibody clone with 68475-1-PBS in a different storage buffer formulation.



Immunofluorescent analysis of (4% PFA) fixed HepG2 cells using Lamin B2 antibody (68475-1-Ig, Clone: 2C7B1) at dilution of 1:1000 and CoraLite®488-Conjugated AffiniPure Goat Anti-Mouse IgG(H+L) (SA00013-1), CL594-phalloidin (red). This data was developed using the same antibody clone with 68475-1-PBS in a different storage buffer formulation.