

For Research Use Only

AMY2B Monoclonal antibody, PBS Only



Catalog Number: 68474-1-PBS

Basic Information

Catalog Number: 68474-1-PBS	GenBank Accession Number: BC011179	Purification Method: Protein A purification
Size: 100ug , Concentration: 1 mg/ml by Nanodrop;	GeneID (NCBI): 280	CloneNo.: 2E5G2
Source: Mouse	UNIPROT ID: P19961	
Isotype: IgG1	Full Name: amylase, alpha 2B (pancreatic)	
Immunogen Catalog Number: AG3260	Calculated MW: 511 aa, 58 kDa	
	Observed MW: 50 kDa	

Applications

Tested Applications:
WB, ELISA

Species Specificity:
Human, Mouse, Rat, Pig

Background Information

AMY2B(alpha-amylase 2B) belongs to the glycosyl hydrolase 13 family. This protein is involved in the endohydrolysis of 1,4-alpha-glucosidic linkages in oligosaccharides and polysaccharides. Human amylases (Amy1, Amy2A, and Amy2B) commonly have two potential N-glycosylation sites (N427 and N476) in their C-terminal region (S Takashima, J Amano, 2012).

Storage

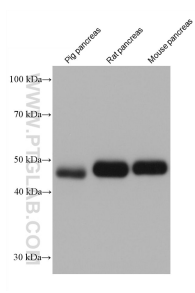
Storage:
Store at -80°C.

Storage Buffer:
PBS only

For technical support and original validation data for this product please contact:
T: 1 (888) 4PTGLAB (1-888-478-4522) (toll free in USA), or 1(312) 455-8498 (outside USA)
E: proteintech@ptglab.com
W: ptglab.com

This product is exclusively available under Proteintech Group brand and is not available to purchase from any other manufacturer.

Selected Validation Data



Various lysates were subjected to SDS PAGE followed by western blot with 68474-1-Ig (AMY2B antibody) at dilution of 1:20000 incubated at room temperature for 1.5 hours. This data was developed using the same antibody clone with 68474-1-PBS in a different storage buffer formulation.