

For Research Use Only

RHOT2 Monoclonal antibody, PBS Only



Catalog Number: 68469-1-PBS

Basic Information

Catalog Number: 68469-1-PBS	GenBank Accession Number: BC014942	Purification Method: Protein G purification
Size: 100ug , Concentration: 1 mg/ml by Nanodrop;	GeneID (NCBI): 89941	CloneNo.: 1A3C2
Source: Mouse	UNIPROT ID: Q8IXI1	
Isotype: IgG1	Full Name: ras homolog gene family, member T2	
Immunogen Catalog Number: AG29690	Calculated MW: 68 kDa	
	Observed MW: 68 kDa	

Applications

Tested Applications:
WB, Indirect ELISA

Species Specificity:
Human

Background Information

RHOT2 (Mitochondrial Rho GTPase 2) is also named as MIRO-2, hMiro-2, ARHT2, C16orf39 and Ras homolog gene family member T2. RHOT2 belongs to the mitochondrial Rho GTPase family. RHOT2 gene encodes a member of Rho family of GTPase, which are localized to the outer membrane of mitochondria (PMID: 22078885).

Storage

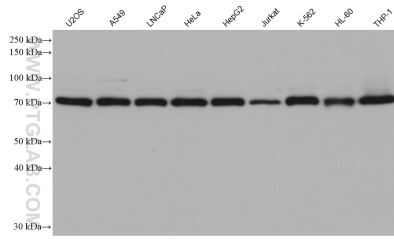
Storage:
Store at -80°C.

Storage Buffer:
PBS Only

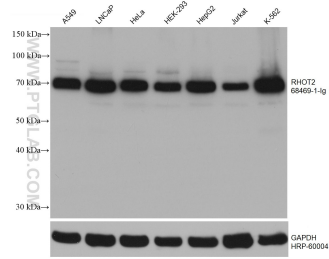
For technical support and original validation data for this product please contact:
T: 1 (888) 4PTGLAB (1-888-478-4522) (toll free in USA), or 1(312) 455-8498 (outside USA) E: proteintech@ptglab.com
W: ptglab.com

This product is exclusively available under Proteintech Group brand and is not available to purchase from any other manufacturer.

Selected Validation Data



Various lysates were subjected to SDS PAGE followed by western blot with 68469-1-Ig (RHOT2 antibody) at dilution of 1:20000 incubated at room temperature for 1.5 hours. This data was developed using the same antibody clone with 68469-1-PBS in a different storage buffer formulation.



Various lysates were subjected to SDS PAGE followed by western blot with 68469-1-Ig (RHOT2 antibody) at dilution of 1:10000 incubated at room temperature for 1.5 hours. The membrane was stripped and reblotted with HRP-conjugated GAPDH Monoclonal antibody (HRP-60004) as loading control. This data was developed using the same antibody clone with 68469-1-PBS in a different storage buffer formulation.