

For Research Use Only

MYH6 Monoclonal antibody

Catalog Number: 68461-1-Ig



Basic Information

Catalog Number: 68461-1-Ig	GenBank Accession Number: NM_002471	Purification Method: Protein G purification
Size: 150ul , Concentration: 1000 µg/ml by Nanodrop;	GeneID (NCBI): 4624	CloneNo.: 1A5E5
Source: Mouse	Full Name: myosin, heavy chain 6, cardiac muscle, alpha	Recommended Dilutions: WB 1:5000-1:50000
Isotype: IgG1	Calculated MW: 224 kDa	
	Observed MW: 200-220 kDa	

Applications

Tested Applications: WB, ELISA	Positive Controls: WB : mouse heart tissue, rat heart tissue
Species Specificity: mouse, rat	

Background Information

Storage

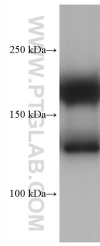
Storage:
Store at -20°C. Stable for one year after shipment.
Storage Buffer:
PBS with 0.02% sodium azide and 50% glycerol pH 7.3.
Aliquoting is unnecessary for -20°C storage

*** 20ul sizes contain 0.1% BSA

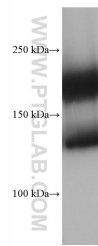
For technical support and original validation data for this product please contact:
T: 1 (888) 4PTGLAB (1-888-478-4522) (toll free in USA), or 1(312) 455-8498 (outside USA) E: proteintech@ptglab.com
W: ptglab.com

This product is exclusively available under Proteintech Group brand and is not available to purchase from any other manufacturer.

Selected Validation Data



rat heart tissue were subjected to SDS PAGE followed by western blot with 68461-1-Ig (MYH6 antibody) at dilution of 1:20000 incubated at room temperature for 1.5 hours.



mouse heart tissue were subjected to SDS PAGE followed by western blot with 68461-1-Ig (MYH6 antibody) at dilution of 1:20000 incubated at room temperature for 1.5 hours.