

For Research Use Only

SQRDL Monoclonal antibody, PBS Only

Catalog Number: 68459-1-PBS

Featured Product



Basic Information

Catalog Number:

68459-1-PBS

Size:

100ug, Concentration: 1 mg/ml by Nanodrop;

Source:

Mouse

Isotype:

IgG2b

Immunogen Catalog Number:

AG10762

GenBank Accession Number:

BC016836

GeneID (NCBI):

58472

UNIPROT ID:

Q9Y6N5

Full Name:

sulfide quinone reductase-like (yeast)

Calculated MW:

450 aa, 50 kDa

Observed MW:

50 kDa

Purification Method:

Protein A purification

CloneNo.:

1B4E3

Applications

Tested Applications:

WB, IHC, IF/ICC, IP, Indirect ELISA

Species Specificity:

human, pig

Background Information

SQRDL (Sulfide:quinone oxidoreductase, mitochondrial) catalyzes the oxidation of hydrogen sulfide, with the help of a quinone. Although the SQRDL precursor protein displays a molecular weight of 50 kDa, a prominent band at about 46 kDa is detected by western blot. This discrepancy reflects the cleavage of an N-terminal targeting sequence of 4 kDa during the import of the protein into the mitochondria (PMID:22067608). SQRDL is one of the enzymes involved in H₂S signaling in a discrete population of neurons, oligodendrocytes, and endothelial cells.

Storage

Storage:

Store at -80°C.

Storage Buffer:

PBS Only

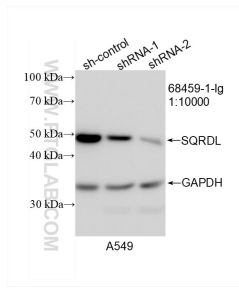
For technical support and original validation data for this product please contact:

T: 1 (888) 4PTGLAB (1-888-478-4522) (toll free in USA), or 1(312) 455-8498 (outside USA)

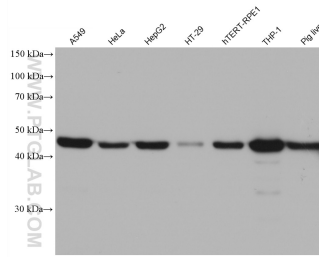
E: proteintech@ptglab.com
W: ptglab.com

This product is exclusively available under Proteintech Group brand and is not available to purchase from any other manufacturer.

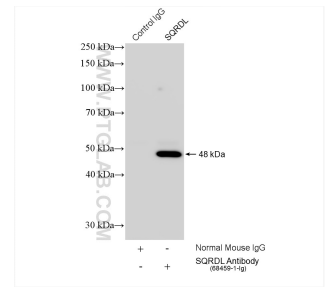
Selected Validation Data



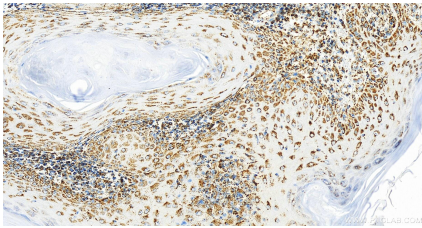
WB result of SQRDL antibody (68459-1-Ig; 1:10000; incubated at room temperature for 1.5 hours) with sh-Control and sh-SQRDL transfected A549 cells. This data was developed using the same antibody clone with 68459-1-PBS in a different storage buffer formulation.



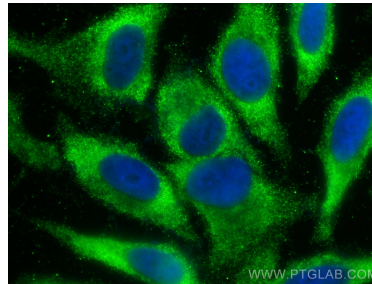
Various lysates were subjected to SDS PAGE followed by western blot with 68459-1-Ig (SQRDL antibody) at dilution of 1:20000 incubated at room temperature for 1.5 hours. This data was developed using the same antibody clone with 68459-1-PBS in a different storage buffer formulation.



IP result of anti-SQRDL (IP:68459-1-Ig, 4ug; Detection:68459-1-Ig 1:3000) with HeLa cells lysate 1560 ug. This data was developed using the same antibody clone with 68459-1-PBS in a different storage buffer formulation.



Immunohistochemical analysis of paraffin-embedded skin cancer slide using 68459-1-Ig (SQRDL antibody) at dilution of 1:4000 (under 20x lens). Heat mediated antigen retrieval with Tris-EDTA buffer (pH 9.0). This data was developed using the same antibody clone with 68459-1-PBS in a different storage buffer formulation.



Immunofluorescent analysis of (-20°C Ethanol) fixed HepG2 cells using SQRDL antibody (68459-1-Ig, Clone: 1B4E3) at dilution of 1:400 and CoralLite® 488-Conjugated AffiniPure Goat Anti-Mouse IgG(H+L) (SA00013-1). This data was developed using the same antibody clone with 68459-1-PBS in a different storage buffer formulation.