

For Research Use Only

FBLN1 Monoclonal antibody, PBS Only (Detector)

Catalog Number: 68453-1-PBS



Basic Information

Catalog Number: 68453-1-PBS	GenBank Accession Number: BC022497	Purification Method: Protein A purification
Size: 100ug , Concentration: 1mg/ml by Nanodrop;	GeneID (NCBI): 2192	CloneNo.: 1F4A1
Source: Mouse	UNIPROT ID: P23142	
Isotype: IgG1	Full Name: fibulin 1	
Immunogen Catalog Number: AG14249	Calculated MW: 703 aa, 77 kDa	
	Observed MW: 100 kDa	

Applications

Tested Applications:
WB, Cytometric bead array, Indirect ELISA

Species Specificity:
human

Product Information

68453-1-PBS targets FBLN1 as part of a matched antibody pair:

MP50734-3: 68453-2-PBS capture and 68453-1-PBS detection (validated in Cytometric bead array)

Unconjugated mouse monoclonal antibody pair in PBS only (BSA and azide free) storage buffer at a concentration of 1 mg/mL, ready for conjugation.

This conjugation ready format makes antibodies ideal for use in many applications including: ELISAs, multiplex assays requiring matched pairs, mass cytometry, and multiplex imaging applications. Antibody use should be optimized by the end user for each application and assay.

Storage

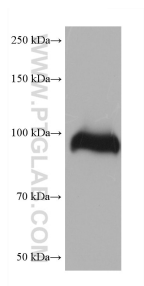
Storage:
Store at -80°C.

Storage Buffer:
PBS Only

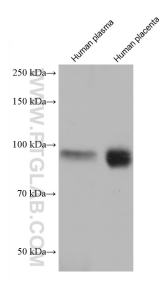
For technical support and original validation data for this product please contact:
T: 1 (888) 4PTGLAB (1-888-478-4522) (toll free in USA), or 1(312) 455-8498 (outside USA)
E: proteintech@ptglab.com
W: ptglab.com

This product is exclusively available under Proteintech Group brand and is not available to purchase from any other manufacturer.

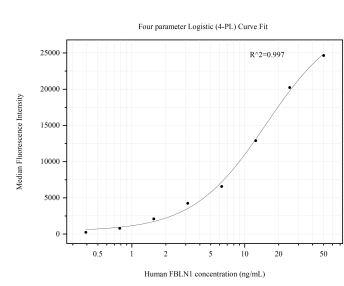
Selected Validation Data



human placenta tissue were subjected to SDS PAGE followed by western blot with 68453-1-Ig (FBLN1 antibody) at dilution of 1:10000 incubated at room temperature for 1.5 hours. This data was developed using the same antibody clone with 68453-1-PBS in a different storage buffer formulation.



Various lysates were subjected to SDS PAGE followed by western blot with 68453-1-Ig (FBLN1 antibody) at dilution of 1:10000 incubated at room temperature for 1.5 hours. This data was developed using the same antibody clone with 68453-1-PBS in a different storage buffer formulation.



Cytometric bead array standard curve of MP50734-3, FBLN1 Monoclonal Matched Antibody Pair, PBS Only. Capture antibody: 68453-2-PBS. Detection antibody: 68453-1-PBS. Standard:Ag14249. Range: 0.391-50 ng/mL