

For Research Use Only

GIMAP7 Monoclonal antibody, PBS Only (Capture)

Catalog Number: 68451-1-PBS



Basic Information

Catalog Number: 68451-1-PBS	GenBank Accession Number: BC027613	Purification Method: Protein G purification
Size: 100ug , Concentration: 1mg/ml by Nanodrop;	GeneID (NCBI): 168537	CloneNo.: 3E4A6
Source: Mouse	UNIPROT ID: Q8NHV1	
Isotype: IgG1	Full Name: GTPase, IMAP family member 7	
Immunogen Catalog Number: AG10740	Calculated MW: 300 aa, 35 kDa	
	Observed MW: 34 kDa	

Applications

Tested Applications:
WB, IF/ICC, IP, Cytometric bead array, Indirect ELISA

Species Specificity:
human

Product Information

68451-1-PBS targets GIMAP7 as part of a matched antibody pair:

MP50958-1: 68451-1-PBS capture and 68451-2-PBS detection (validated in Cytometric bead array)

MP50958-2: 68451-1-PBS capture and 68451-3-PBS detection (validated in Cytometric bead array)

MP50958-3: 68451-1-PBS capture and 68451-4-PBS detection (validated in Cytometric bead array)

MP50958-4: 68451-1-PBS capture and 68451-5-PBS detection (validated in Cytometric bead array)

Unconjugated mouse monoclonal antibody pair in PBS only (BSA and azide free) storage buffer at a concentration of 1 mg/mL, ready for conjugation.

This conjugation ready format makes antibodies ideal for use in many applications including: ELISAs, multiplex assays requiring matched pairs, mass cytometry, and multiplex imaging applications. Antibody use should be optimized by the end user for each application and assay.

Background Information

GIMAP7, also known as hIAN7 or IAN 7, is a transmembrane protein located in the endoplasmic reticulum and Golgi apparatus. GIMAP7 can promote oxidative stress and apoptosis in ovarian granulosa cells in Polycystic ovary syndrome by inhibiting the SHH signalling pathway (PMID: 36581994). The MW of this protein is 34 kDa, and this antibody specially recognises the 34 kDa protein.

Storage

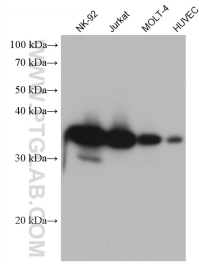
Storage:
Store at -80°C.

Storage Buffer:
PBS Only

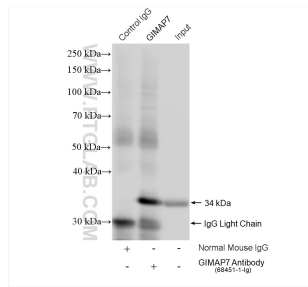
For technical support and original validation data for this product please contact:
T: 1 (888) 4PTGLAB (1-888-478-4522) (toll free in USA), or 1(312) 455-8498 (outside USA) E: proteintech@ptglab.com
W: ptglab.com

This product is exclusively available under Proteintech Group brand and is not available to purchase from any other manufacturer.

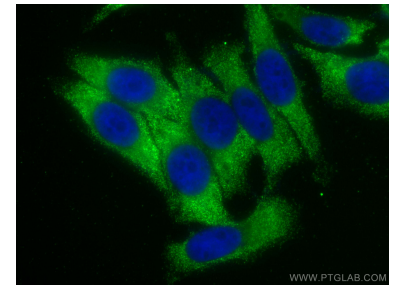
Selected Validation Data



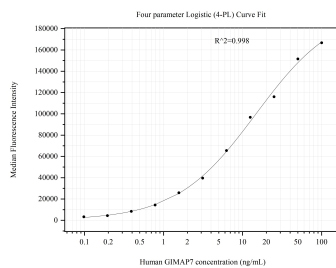
Various lysates were subjected to SDS PAGE followed by western blot with 68451-1-Ig (GIMAP7 antibody) at dilution of 1:10000 incubated at room temperature for 1.5 hours. This data was developed using the same antibody clone with 68451-1-PBS in a different storage buffer formulation.



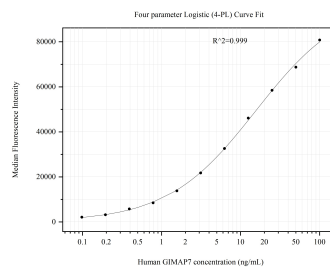
IP result of anti-GIMAP7 (IP:68451-1-Ig, 4ug; Detection:68451-1-Ig 1:2000) with Jurkat cells lysate 1560 ug. This data was developed using the same antibody clone with 68451-1-PBS in a different storage buffer formulation.



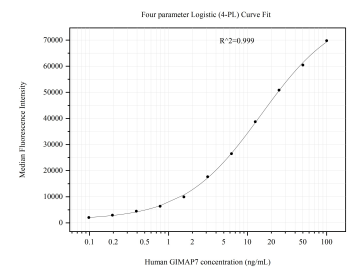
Immunofluorescent analysis of (-20°C Ethanol) fixed HepG2 cells using GIMAP7 antibody (68451-1-Ig, Clone: 3E4A6) at dilution of 1:800 and CoraLite@488-Conjugated AffiniPure Goat Anti-Mouse IgG(H+L). This data was developed using the same antibody clone with 68451-1-PBS in a different storage buffer formulation.



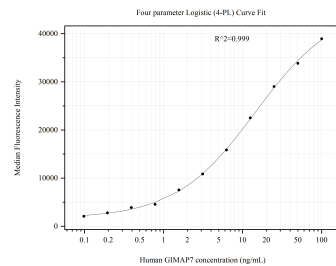
Cytometric bead array standard curve of MP50958-1, GIMAP7 Monoclonal Matched Antibody Pair, PBS Only. Capture antibody: 68451-1-PBS. Detection antibody: 68451-2-PBS. Standard:Ag10740. Range: 0.098-100 ng/mL



Cytometric bead array standard curve of MP50958-2, GIMAP7 Monoclonal Matched Antibody Pair, PBS Only. Capture antibody: 68451-1-PBS. Detection antibody: 68451-3-PBS. Standard:Ag10740. Range: 0.098-100 ng/mL



Cytometric bead array standard curve of MP50958-3, GIMAP7 Monoclonal Matched Antibody Pair, PBS Only. Capture antibody: 68451-1-PBS. Detection antibody: 68451-4-PBS. Standard:Ag10740. Range: 0.098-100 ng/mL



Cytometric bead array standard curve of MP50958-4, GIMAP7 Monoclonal Matched Antibody Pair, PBS Only. Capture antibody: 68451-1-PBS. Detection antibody: 68451-5-PBS. Standard:Ag10740. Range: 0.098-100 ng/mL