

For Research Use Only

OTUD6B Monoclonal antibody, PBS Only (Capture)

Catalog Number: 68450-1-PBS



Basic Information

Catalog Number: 68450-1-PBS	GenBank Accession Number: BC029760	Purification Method: Protein A purification
Size: 100ug, Concentration: 1mg/ml by Nanodrop;	GeneID (NCBI): 51633	CloneNo.: 1D1G1
Source: Mouse	UNIPROT ID: Q8N6M0	
Isotype: IgG1	Full Name: OTU domain containing 6B	
Immunogen Catalog Number: AG33607	Calculated MW: 293 aa, 34 kDa	
	Observed MW: 34-40 kDa	

Applications

Tested Applications:
WB, IF/ICC, Cytometric bead array, Indirect ELISA

Species Specificity:
human, mouse, rat

Product Information

68450-1-PBS targets OTUD6B as part of a matched antibody pair:

MP50962-1: 68450-1-PBS capture and 68450-2-PBS detection (validated in Cytometric bead array)

MP50962-2: 68450-1-PBS capture and 68450-3-PBS detection (validated in Cytometric bead array)

MP50962-3: 68450-1-PBS capture and 68450-4-PBS detection (validated in Cytometric bead array)

Unconjugated mouse monoclonal antibody pair in PBS only (BSA and azide free) storage buffer at a concentration of 1 mg/mL, ready for conjugation.

This conjugation ready format makes antibodies ideal for use in many applications including: ELISAs, multiplex assays requiring matched pairs, mass cytometry, and multiplex imaging applications. Antibody use should be optimized by the end user for each application and assay.

Background Information

OTUD6B, also known as DUBA5, belongs to a DUB subfamily characterized by an ovarian tumor domain (OTU). It's a functional deubiquitinating enzyme, a class of protease that specifically cleaves ubiquitin linkages. OTUD6B function may be connected to growth and proliferation. It has been reported that OTUD6B could significantly suppress HCC cells migration and metastasis. The calculated molecular weight of OTUD6B is 34 kDa, 68450-1-Ig can detect the band around 34 kDa. (PMID:32323143)

Storage

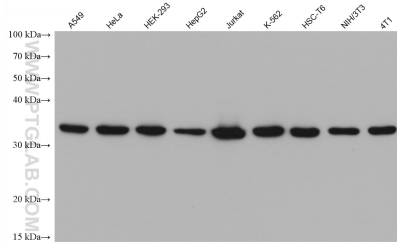
Storage:
Store at -80°C.

Storage Buffer:
PBS Only

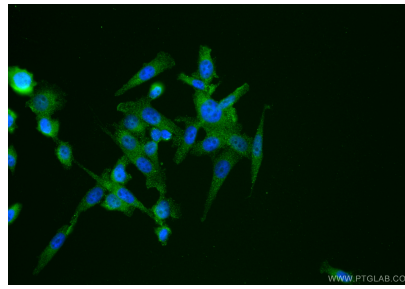
For technical support and original validation data for this product please contact:
T: 1 (888) 4PTGLAB (1-888-478-4522) (toll free in USA), or 1(312) 455-8498 (outside USA)
E: proteintech@ptglab.com
W: ptglab.com

This product is exclusively available under Proteintech Group brand and is not available to purchase from any other manufacturer.

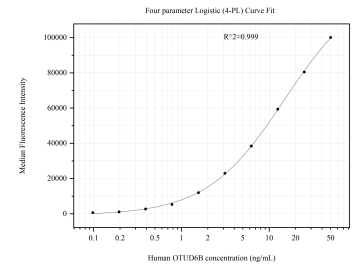
Selected Validation Data



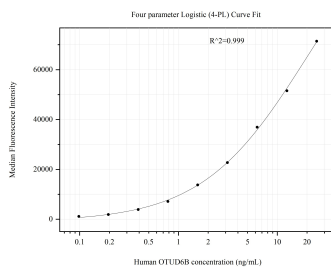
Various lysates were subjected to SDS PAGE followed by western blot with 68450-1-Ig (OTUD6B antibody) at dilution of 1:10000 incubated at room temperature for 1.5 hours. This data was developed using the same antibody clone with 68450-1-PBS in a different storage buffer formulation.



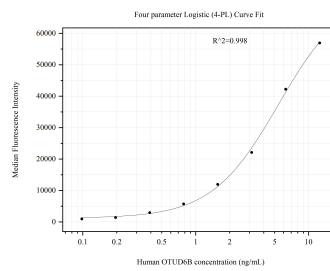
Immunofluorescent analysis of (-20°C Ethanol) fixed PC-3 cells using OTUD6B antibody (68450-1-Ig, Clone: 1D1G1) at dilution of 1:800 and CoraLite®488-Conjugated Goat Anti-Mouse IgG(H+L) (SA00013-1). This data was developed using the same antibody clone with 68450-1-PBS in a different storage buffer formulation.



Cytometric bead array standard curve of MP50962-1, OTUD6B Monoclonal Matched Antibody Pair, PBS Only. Capture antibody: 68450-1-PBS. Detection antibody: 68450-2-PBS. Standard:Ag33607. Range: 0.098-50 ng/mL.



Cytometric bead array standard curve of MP50962-2, OTUD6B Monoclonal Matched Antibody Pair, PBS Only. Capture antibody: 68450-1-PBS. Detection antibody: 68450-3-PBS. Standard:Ag33607. Range: 0.098-25 ng/mL.



Cytometric bead array standard curve of MP50962-3, OTUD6B Monoclonal Matched Antibody Pair, PBS Only. Capture antibody: 68450-1-PBS. Detection antibody: 68450-4-PBS. Standard:Ag33607. Range: 0.098-12.5 ng/mL.