

For Research Use Only

# HERPUD2 Monoclonal antibody, PBS Only



Catalog Number: 68427-1-PBS

## Basic Information

<b>Catalog Number:</b> 68427-1-PBS	<b>GenBank Accession Number:</b> BC005091	<b>Purification Method:</b> Protein A purification
<b>Size:</b> 100ug , Concentration: 1 mg/ml by Nanodrop;	<b>GeneID (NCBI):</b> 64224	<b>CloneNo.:</b> 1H10H1
<b>Source:</b> Mouse	<b>UNIPROT ID:</b> Q9BSE4	
<b>Isotype:</b> IgG3	<b>Full Name:</b> HERPUD family member 2	
<b>Immunogen Catalog Number:</b> AG15007	<b>Calculated MW:</b> 406 aa, 45 kDa	
	<b>Observed MW:</b> 35-45 kDa	

## Applications

**Tested Applications:**  
WB, IF, Indirect ELISA

**Species Specificity:**  
Human

## Background Information

HERPUD2, also named as Homocysteine-responsive endoplasmic reticulum-resident ubiquitin-like domain member 2 protein, is a 406 amino acid protein, which contains one ubiquitin-like domain. HERPUD2 as a single-pass membrane protein could be involved in the unfolded protein response (UPR) pathway. HERPUD2 may exist as two isoforms 406aa, 45 kDa and 297aa 33 kDa (Genebank:EAW94050).

## Storage

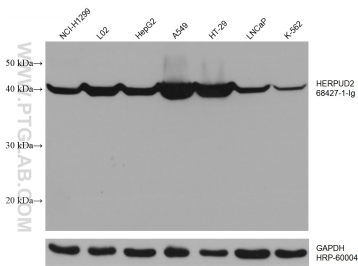
**Storage:**  
Store at -80°C.

**Storage Buffer:**  
PBS Only

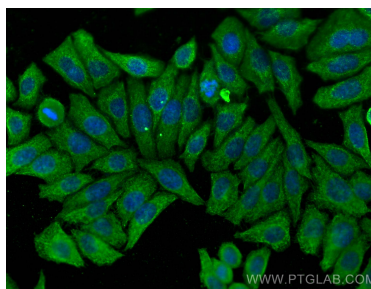
For technical support and original validation data for this product please contact:  
T: 1 (888) 4PTGLAB (1-888-478-4522) (toll free in USA), or 1(312) 455-8498 (outside USA)      E: [proteintech@ptglab.com](mailto:proteintech@ptglab.com)  
W: [ptglab.com](http://ptglab.com)

This product is exclusively available under Proteintech Group brand and is not available to purchase from any other manufacturer.

## Selected Validation Data



Various lysates were subjected to SDS PAGE followed by western blot with 68427-1-Ig (HERPUD2 antibody) at dilution of 1:40000 incubated at room temperature for 1.5 hours. The membrane was stripped and reblotted with HRP-conjugated GAPDH Monoclonal antibody (HRP-60004) as loading control. This data was developed using the same antibody clone with 68427-1-PBS in a different storage buffer formulation.



Immunofluorescent analysis of (-20°C Methanol) fixed HepG2 cells using HERPUD2 antibody (68427-1-Ig, Clone: 1H10H1) at dilution of 1:400 and CoraLite®488-Conjugated AffiniPure Goat Anti-Mouse IgG(H+L). This data was developed using the same antibody clone with 68427-1-PBS in a different storage buffer formulation.