

For Research Use Only

SYAP1 Monoclonal antibody, PBS Only



Catalog Number: 68410-1-PBS

Basic Information

Catalog Number: 68410-1-PBS	GenBank Accession Number: BC014657	Purification Method: Protein A purification
Size: 100ug , Concentration: 1 mg/ml by Nanodrop;	GeneID (NCBI): 94056	CloneNo.: 2E12A5
Source: Mouse	UNIPROT ID: Q96A49	
Isotype: IgG2b	Full Name: synapse associated protein 1, SAP47 homolog (Drosophila)	
Immunogen Catalog Number: AG9626	Calculated MW: 352 aa, 40 kDa	
	Observed MW: 50-55 kDa	

Applications

Tested Applications:
WB, IP, IF, Indirect ELISA

Species Specificity:
Human, mouse, rat

Background Information

SYAP1(Synapse-associated protein 1) is a human homologue of the Drosophila SAP47 (synapse associated protein), which is recognized by a monoclonal antibody that selectively stain synaptic terminals. This protein is a 352 amino acid protein that is ubiquitously expressed in adult tissues. SYAP1 contains one BSD domain which is an approximately 60 amino acid long protein domain named after the BTF2-like transcription factors, Synapse-associated proteins and DOS2-like proteins in which it is found.

Storage

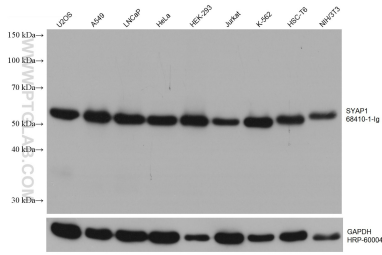
Storage:
Store at -80°C.

Storage Buffer:
PBS Only

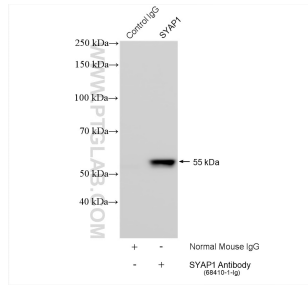
For technical support and original validation data for this product please contact:
T: 1 (888) 4PTGLAB (1-888-478-4522) (toll free in USA), or 1(312) 455-8498 (outside USA) E: proteintech@ptglab.com
W: ptglab.com

This product is exclusively available under Proteintech Group brand and is not available to purchase from any other manufacturer.

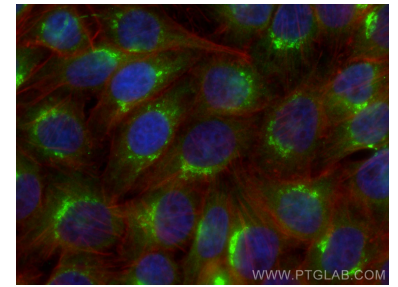
Selected Validation Data



Various lysates were subjected to SDS PAGE followed by western blot with 68410-1-Ig (SYAP1 antibody) at dilution of 1:10000 incubated at room temperature for 1.5 hours. The membrane was stripped and reblotted with HRP-conjugated GAPDH Monoclonal antibody (HRP-60004) as loading control. This data was developed using the same antibody clone with 68410-1-PBS in a different storage buffer formulation.



IP result of anti-SYAP1 (IP:68410-1-Ig, 4ug; Detection:68410-1-Ig 1:2000) with L02 cells lysate 3080 ug. This data was developed using the same antibody clone with 68410-1-PBS in a different storage buffer formulation.



Immunofluorescent analysis of (4% PFA) fixed HepG2 cells using SYAP1 antibody (68410-1-Ig, Clone: 2E12A5) at dilution of 1:800 and CoraLite®488-Conjugated AffiniPure Goat Anti-Mouse IgG(H+L), CL594-Phalloidin (red). This data was developed using the same antibody clone with 68410-1-PBS in a different storage buffer formulation.