

For Research Use Only

STUB1 Monoclonal antibody, PBS Only

Catalog Number: 68407-1-PBS



Basic Information

Catalog Number:

68407-1-PBS

Size:

100ug, Concentration: 1mg/ml by Nanodrop;

Source:

Mouse

Isotype:

IgG1

GenBank Accession Number:

NM_005861

GeneID (NCBI):

10273

UNIPROT ID:

Q9UNE7

Full Name:

STIP1 homology and U-box containing protein 1

Calculated MW:

35 kDa

Observed MW:

35 kDa

Purification Method:

Protein A purification

CloneNo.:

2E6B9

Applications

Tested Applications:

WB, IF/ICC, Indirect ELISA

Species Specificity:

human, rat

Background Information

STUB1, also named as CHIP, SDCCAG7, UBOX1 and NY-CO-7, is a E3 ubiquitin-protein ligase which targets misfolded chaperone substrates towards proteasomal degradation. STUB1/CHIP modulates the activity of several chaperone complexes, including Hsp70, Hsc70 and Hsp90. It mediates transfer of non-canonical short ubiquitin chains to HSPA8 that have no effect on HSPA8 degradation. STUB1/CHIP mediates polyubiquitination of CYP3A4. (PMID:10330192) CHIP/STUB1 strongly reduced keratin aggregates through increased degradation of mutant K14. (PMID:20151404) STUB1/CHIP regulates NAD(P)H:quinone oxidoreductase 1 (NQO1) accumulation in aged brain, a process impaired in certain Alzheimer patients. (PMID:21220432) This antibody is specific to STUB1.

Storage

Storage:

Store at -80°C.

Storage Buffer:

PBS Only

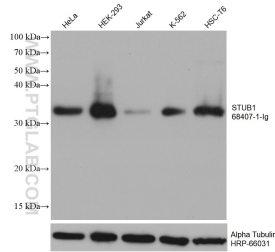
For technical support and original validation data for this product please contact:

T: 1 (888) 4PTGLAB (1-888-478-4522) (toll free in USA), or 1(312) 455-8498 (outside USA)

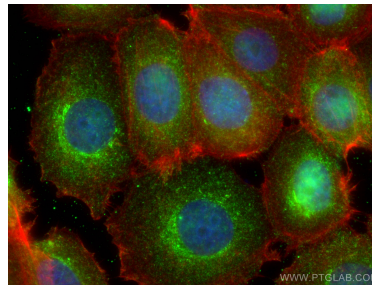
E: proteintech@ptglab.com
W: ptglab.com

This product is exclusively available under Proteintech Group brand and is not available to purchase from any other manufacturer.

Selected Validation Data



Various lysates were subjected to SDS PAGE followed by western blot with 68407-1-Ig (STUB1 antibody) at dilution of 1:10000 incubated at room temperature for 1.5 hours. The membrane was stripped and reblotted with HRP-conjugated Alpha Tubulin Monoclonal antibody (HRP-66031) as loading control. This data was developed using the same antibody clone with 68407-1-PBS in a different storage buffer formulation.



Immunofluorescent analysis of (4% PFA) fixed MCF-7 cells using STUB1 antibody (68407-1-Ig, Clone: 2E6B9) at dilution of 1:800 and CoraLite®488-Conjugated AffiniPure Goat Anti-Mouse IgG(H+L), CL594-Phalloidin (red). This data was developed using the same antibody clone with 68407-1-PBS in a different storage buffer formulation.