

For Research Use Only

NPHP5/IQCB1 Monoclonal antibody

Catalog Number: 68404-1-Ig



Basic Information

Catalog Number: 68404-1-Ig	GenBank Accession Number: BC005806	Purification Method: Protein A purification
Size: 150ul , Concentration: 1000 ug/ml by Nanodrop;	GeneID (NCBI): 9657	CloneNo.: 2A9F4
Source: Mouse	UNIPROT ID: Q15051	Recommended Dilutions: WB 1:2000-1:10000
Isotype: IgG2a	Full Name: IQ motif containing B1	
Immunogen Catalog Number: AG8203	Calculated MW: 598 aa, 69 kDa	
	Observed MW: 69 kDa	

Applications

Tested Applications:
WB, ELISA

Species Specificity:
Human

Positive Controls:

WB : HaCaT cells, A431 cells, HT-1376 cells, Saos-2 cells, MDA-MB-468 cells, HEK-293 cells, COLO 320 cells, HL-60 cells, Daudi cells

Background Information

IQCB1, also known as NPHP5, is a nephrocystin protein that interacts with calmodulin and the retinitis pigmentosa GTPase regulator protein. It has a central coiled-coil region and two calmodulin-binding IQ domains. Localized to the primary cilia of renal epithelial cells and connecting cilia of photoreceptor cells, IQCB1 is thought to play a role in ciliary function. Mutations in this gene result in Senior-Loken syndrome type 5, a juvenile disorder characterized by defects in the waste filtering system of the kidney, as well as retinal degradation.

Storage

Storage:

Store at -20°C. Stable for one year after shipment.

Storage Buffer:

PBS with 0.02% sodium azide and 50% glycerol pH 7.3.

Aliquoting is unnecessary for -20°C storage

***** 20ul sizes contain 0.1% BSA**

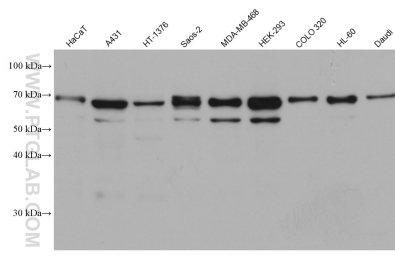
For technical support and original validation data for this product please contact:

T: 1 (888) 4PTGLAB (1-888-478-4522) (toll free in USA), or 1(312) 455-8498 (outside USA)

E: proteintech@ptglab.com
W: ptglab.com

This product is exclusively available under Proteintech Group brand and is not available to purchase from any other manufacturer.

Selected Validation Data



Various lysates were subjected to SDS PAGE followed by western blot with 68404-1-Ig (NPHP5,IQCB1 antibody) at dilution of 1:5000 incubated at room temperature for 1.5 hours.