

For Research Use Only

IGFBP3 Monoclonal antibody, PBS Only



Catalog Number: 68402-1-PBS

Basic Information

Catalog Number: 68402-1-PBS	GenBank Accession Number: BC000013	Purification Method: Thiophilic affinity chromatograph
Size: 100ug , Concentration: 1 mg/ml by Nanodrop;	GeneID (NCBI): 3486	CloneNo.: 1A12A11
Source: Mouse	UNIPROT ID: P17936	
Isotype: IgM	Full Name: insulin-like growth factor binding protein 3	
Immunogen Catalog Number: AG20351	Calculated MW: 32 kDa	
	Observed MW: 39-45 kDa	

Applications

Tested Applications:
WB, IHC, Indirect ELISA

Species Specificity:
Human

Background Information

Insulin-like growth factor binding protein-3 (IGFBP-3) contains a 27 amino acid putative signal sequence followed by a mature protein of 264 amino acids with 18 cysteine residues clustered near the N- and C-terminus. Accordingly, expression of the cloned IGFBP-3 cDNA in mammalian tissue culture cells results in secretion of the protein into the culture medium. IGFBP-3 shares high homology (33% amino acid identity) including conservation of all 18 cysteine residues with a smaller human IGF-binding protein (BP-28) identified in amniotic fluid. IGFBP-3 has one or more glycosylation sites with a protein core of 30 kDa. Western blots revealed that the 39-45 kDa IGFBP-3 fragment is a glycoprotein. (PMID: 23403918, PMID: 24926947, PMID: 19887447)

Storage

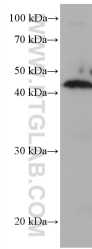
Storage:
Store at -80°C.

Storage Buffer:
PBS Only

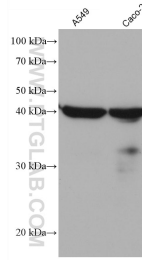
For technical support and original validation data for this product please contact:
T: 1 (888) 4PTGLAB (1-888-478-4522) (toll free in USA), or 1(312) 455-8498 (outside USA)
E: proteintech@ptglab.com
W: ptglab.com

This product is exclusively available under Proteintech Group brand and is not available to purchase from any other manufacturer.

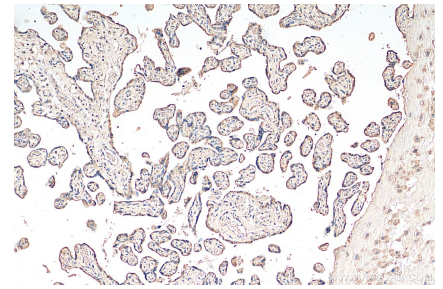
Selected Validation Data



human placenta tissue were subjected to SDS PAGE followed by western blot with 68402-1-Ig (IGFBP3 antibody) at dilution of 1:5000 incubated at room temperature for 1.5 hours. This data was developed using the same antibody clone with 68402-1-PBS in a different storage buffer formulation.



Various lysates were subjected to SDS PAGE followed by western blot with 68402-1-Ig (IGFBP3 antibody) at dilution of 1:5000 incubated at room temperature for 1.5 hours. This data was developed using the same antibody clone with 68402-1-PBS in a different storage buffer formulation.



Immunohistochemical analysis of paraffin-embedded human placenta tissue slide using 68402-1-Ig (IGFBP3 antibody) at dilution of 1:500 (under 10x lens). Heat mediated antigen retrieval with Tris-EDTA buffer (pH 9.0). This data was developed using the same antibody clone with 68402-1-PBS in a different storage buffer formulation.