

For Research Use Only

AMOTL2 Monoclonal antibody, PBS Only



Catalog Number: 68401-1-PBS

Basic Information

| | | |
|---|--|---|
| Catalog Number: 68401-1-PBS | GenBank Accession Number: BC011454 | Purification Method: Protein G purification |
| Size: 100ug , Concentration: 1 mg/ml by Nanodrop; | GeneID (NCBI): 51421 | CloneNo.: 2C4A4 |
| Source: Mouse | UNIPROT ID: Q9Y2J4 | |
| Isotype: IgG1 | Full Name: angiototin like 2 | |
| Immunogen Catalog Number: AG19971 | Calculated MW: 779 aa, 86 kDa | |
| | Observed MW: 100 kDa | |

Applications

Tested Applications:
WB, IF, Indirect ELISA

Species Specificity:
Human

Background Information

Angiototin-like 2 (AMOTL2) is a member of the motin family of angiotatin-binding proteins. The motin family, also known as AMOTs, consists of three members: AMOT, AMOT-like 1 (AMOTL1) and AMOTL2. Members of the motin family are a type of adaptor proteins mainly distributed in the cytomembrane, cytoplasm or nucleus, and have a higher expression in the endothelial cells of capillaries and in larger vessels of the placenta. Human AmotL2 encodes two isoforms of a molecular mass of 100 kDa and 60 kDa.(PMID: 34036399,PMID: 25080976)

Storage

Storage:
Store at -80°C.
Storage Buffer:
PBS Only

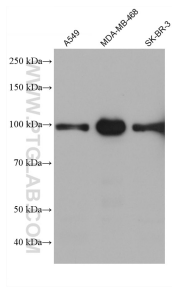
For technical support and original validation data for this product please contact:

T: 1 (888) 4PTGLAB (1-888-478-4522) (toll free in USA), or 1(312) 455-8498 (outside USA)

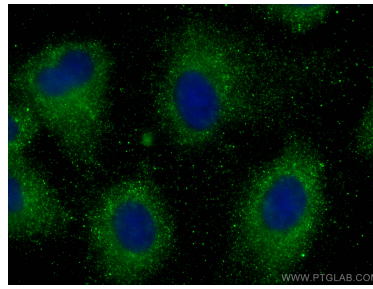
E: proteintech@ptglab.com
W: ptglab.com

This product is exclusively available under Proteintech Group brand and is not available to purchase from any other manufacturer.

Selected Validation Data



Various lysates were subjected to SDS PAGE followed by western blot with 68401-1-Ig (AMOTL2 antibody) at dilution of 1:5000 incubated at room temperature for 1.5 hours. This data was developed using the same antibody clone with 68401-1-PBS in a different storage buffer formulation.



Immunofluorescent analysis of (-20°C Methanol) fixed A549 cells using AMOTL2 antibody (68401-1-Ig, Clone: 2C4A4) at dilution of 1:1000 and CoraLite®488-Conjugated AffiniPure Goat Anti-Mouse IgG(H+L). This data was developed using the same antibody clone with 68401-1-PBS in a different storage buffer formulation.