

For Research Use Only

# B2M Monoclonal antibody, PBS Only (Detector)

Catalog Number: 68395-3-PBS



## Basic Information

<b>Catalog Number:</b> 68395-3-PBS	<b>GenBank Accession Number:</b> BC032589	<b>Purification Method:</b> Protein G purification
<b>Size:</b> 100ug , Concentration: 1 mg/ml by Nanodrop;	<b>GeneID (NCBI):</b> 567	<b>CloneNo.:</b> 4D4D5
<b>Source:</b> Mouse	<b>ENSEMBL Gene ID:</b> ENSG00000166710	
<b>Isotype:</b> IgG1	<b>UNIPROT ID:</b> P61769	
	<b>Full Name:</b> beta-2-microglobulin	
	<b>Calculated MW:</b> 119 aa, 14 kDa	

## Applications

**Tested Applications:**  
Cytometric bead array, Indirect ELISA, Sample test

**Species Specificity:**  
human

## Product Information

68395-3-PBS targets B2M as part of a matched antibody pair:

MP50108-1: 68395-2-PBS capture and 68395-3-PBS detection (validated in Cytometric bead array)

Unconjugated mouse monoclonal antibody pair in PBS only (BSA and azide free) storage buffer at a concentration of 1 mg/mL, ready for conjugation.

This conjugation ready format makes antibodies ideal for use in many applications including: ELISAs, multiplex assays requiring matched pairs, mass cytometry, and multiplex imaging applications. Antibody use should be optimized by the end user for each application and assay.

## Storage

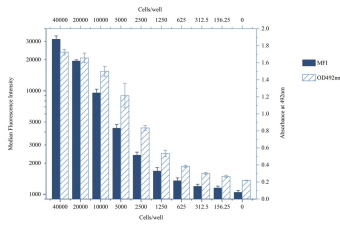
**Storage:**  
Store at -80°C.

**Storage Buffer:**  
PBS Only

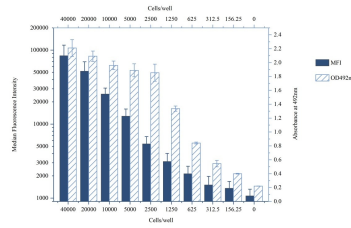
For technical support and original validation data for this product please contact:  
T: 1 (888) 4PTGLAB (1-888-478-4522) (toll free in USA), or 1(312) 455-8498 (outside USA)      E: proteintech@ptglab.com  
W: ptglab.com

This product is exclusively available under Proteintech Group brand and is not available to purchase from any other manufacturer.

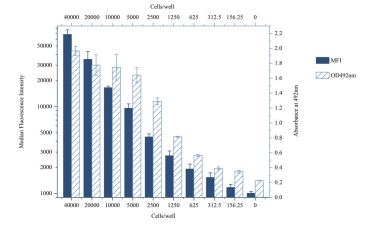
# Selected Validation Data



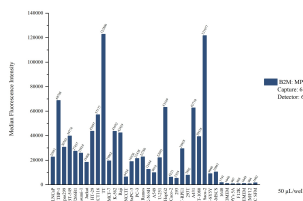
Cytometric bead array of A375 cells supernatant using MP50108-1, B2M Monoclonal Matched Antibody Pair, PBS Only. Capture antibody: 68395-2-PBS. Detection antibody: 68395-3-PBS. Gradient density (indicated at X axis) of A375 cells were inoculated in 96 well plate followed by cultured for 2 days. The supernatant was analyzed using MP50108-1 (B2M Monoclonal Matched Antibody Pair). The signal (Median Fluorescence Intensity) is highly



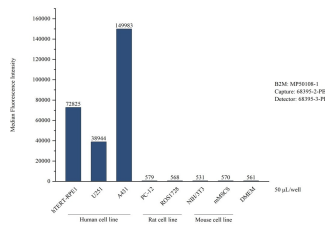
Cytometric bead array of HeLa cells supernatant using MP50108-1, B2M Monoclonal Matched Antibody Pair, PBS Only. Capture antibody: 68395-2-PBS. Detection antibody: 68395-3-PBS. Gradient density (indicated at X axis) of HeLa cells were inoculated in 96 well plate followed by cultured for 2 days. The supernatant was analyzed using MP50108-1 (B2M Monoclonal Matched Antibody Pair). The signal (Median Fluorescence Intensity) is highly



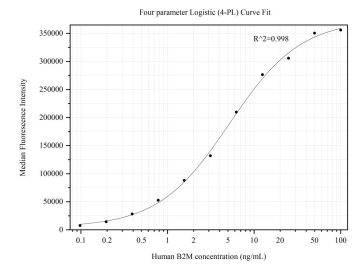
Cytometric bead array of U-251 cells supernatant using MP50108-1, B2M Monoclonal Matched Antibody Pair, PBS Only. Capture antibody: 68395-2-PBS. Detection antibody: 68395-3-PBS. Gradient density (indicated at X axis) of U-251 cells were inoculated in 96 well plate followed by cultured for 2 days. The supernatant was analyzed using MP50108-1 (B2M Monoclonal Matched Antibody Pair). The signal (Median Fluorescence Intensity) is highly



Cytometric bead array of various cell lines supernatant using MP50108-1, B2M Monoclonal Matched Antibody Pair, PBS Only. Capture antibody: 68395-2-PBS. Detection antibody: 68395-3-PBS. Supernatant (50µL/well) from the following cell lines were assayed: LNCaP, THP-1, Karpas299, BT-549, HT-29, U266B1, Kasumi-1, Jurkat, HCT116, TT, MCF-7, K-562, Raji, NCCIT, BxPC-3, PC-3, Ramos, A549, SK-N-SH, U-251, HepG2, Caco-2, 293, 293T, hTERT-



Cytometric bead array of various cell lines supernatant using MP50108-1, B2M Monoclonal Matched Antibody Pair, PBS Only. Capture antibody: 68395-2-PBS. Detection antibody: 68395-3-PBS. Supernatant (50µL/well) from the following cell lines were assayed: hTERT-RPE1, U251, A431, PC-12, ROS1728, NIH/3T3, mMSCS. Complete culture containing DMEM and FBS was served as blank control. Note that this matched antibody pair recognizes human



Cytometric bead array standard curve of MP50108-1, B2M Monoclonal Matched Antibody Pair, PBS Only. Capture antibody: 68395-2-PBS. Detection antibody: 68395-3-PBS. Standard: Eg31815. Range: 0.098-100 ng/mL