

For Research Use Only

Beta-2-Microglobulin Monoclonal antibody, PBS Only (Capture)

Catalog Number: 68395-2-PBS



Basic Information

Catalog Number:

68395-2-PBS

Size:

100ug, Concentration: 1 mg/ml by Nanodrop;

Source:

Mouse

Isotype:

IgG1

GenBank Accession Number:

BC032589

GeneID (NCBI):

567

ENSEMBL Gene ID:

ENSG00000166710

UNIPROT ID:

P61769

Full Name:

beta-2-microglobulin

Calculated MW:

119 aa, 14 kDa

Purification Method:

Protein G purification

CloneNo.:

4B9F9

Applications

Tested Applications:

Cytometric bead array, Indirect ELISA, Sample test

Species Specificity:

human

Product Information

68395-2-PBS targets Beta-2-Microglobulin as part of a matched antibody pair:

MP50108-1: 68395-2-PBS capture and 68395-3-PBS detection (validated in Cytometric bead array)

Unconjugated mouse monoclonal antibody pair in PBS only (BSA and azide free) storage buffer at a concentration of 1 mg/mL, ready for conjugation.

This conjugation ready format makes antibodies ideal for use in many applications including: ELISAs, multiplex assays requiring matched pairs, mass cytometry, and multiplex imaging applications. Antibody use should be optimized by the end user for each application and assay.

Storage

Storage:

Store at -80°C.

Storage Buffer:

PBS Only

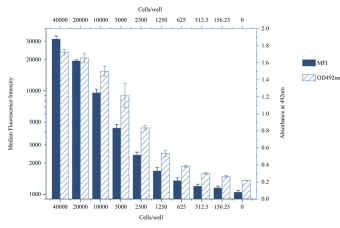
For technical support and original validation data for this product please contact:

T: 1 (888) 4PTGLAB (1-888-478-4522) (toll free in USA), or 1(312) 455-8498 (outside USA)

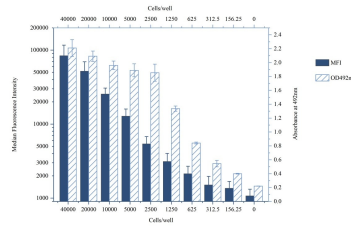
E: proteintech@ptglab.com
W: ptglab.com

This product is exclusively available under Proteintech Group brand and is not available to purchase from any other manufacturer.

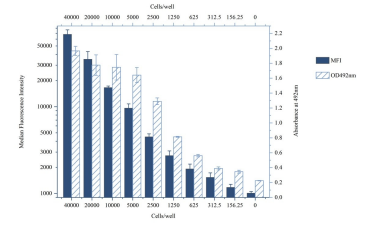
Selected Validation Data



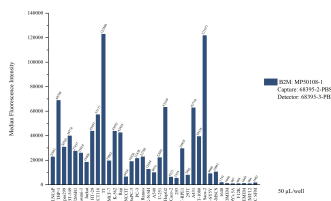
Cytometric bead array of A375 cells supernatant using MP50108-1, B2M Monoclonal Matched Antibody Pair, PBS Only. Capture antibody: 68395-2-PBS. Detection antibody: 68395-3-PBS. Gradient density (indicated at X axis) of A375 cells were inoculated in 96 well plate followed by cultured for 2 days. The supernatant was analyzed using MP50108-1 (B2M Monoclonal Matched Antibody Pair). The signal (Median Fluorescence Intensity) is highly



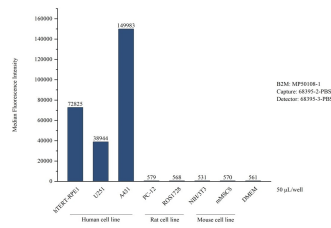
Cytometric bead array of HeLa cells supernatant using MP50108-1, B2M Monoclonal Matched Antibody Pair, PBS Only. Capture antibody: 68395-2-PBS. Detection antibody: 68395-3-PBS. Gradient density (indicated at X axis) of HeLa cells were inoculated in 96 well plate followed by cultured for 2 days. The supernatant was analyzed using MP50108-1 (B2M Monoclonal Matched Antibody Pair). The signal (Median Fluorescence Intensity) is highly



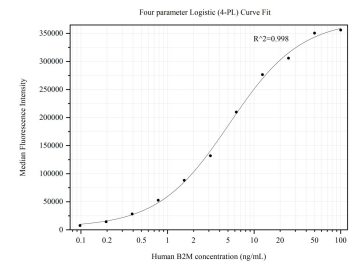
Cytometric bead array of U-251 cells supernatant using MP50108-1, B2M Monoclonal Matched Antibody Pair, PBS Only. Capture antibody: 68395-2-PBS. Detection antibody: 68395-3-PBS. Gradient density (indicated at X axis) of U-251 cells were inoculated in 96 well plate followed by cultured for 2 days. The supernatant was analyzed using MP50108-1 (B2M Monoclonal Matched Antibody Pair). The signal (Median Fluorescence Intensity) is highly



Cytometric bead array of various cell lines supernatant using MP50108-1, B2M Monoclonal Matched Antibody Pair, PBS Only. Capture antibody: 68395-2-PBS. Detection antibody: 68395-3-PBS. Supernatant (50µL/well) from the following cell lines were assayed: LNCaP, THP-1, Karpas299, BT-549, HT-29, U266B1, Kasumi-1, Jurkat, HCT116, TT, MCF-7, K-562, Raji, NCCIT, BxPC-3, PC-3, Ramos, A549, SK-N-SH, U-251, HepG2, Caco-2, 293, 293T, hTERT-



Cytometric bead array of various cell lines supernatant using MP50108-1, B2M Monoclonal Matched Antibody Pair, PBS Only. Capture antibody: 68395-2-PBS. Detection antibody: 68395-3-PBS. Supernatant (50µL/well) from the following cell lines were assayed: hTERT-RPE1, U251, A431, PC-12, ROS1728, NIH/3T3, mMSCS. Complete culture containing DMEM and FBS was served as blank control. Note that this matched antibody pair recognizes human



Cytometric bead array standard curve of MP50108-1, B2M Monoclonal Matched Antibody Pair, PBS Only. Capture antibody: 68395-2-PBS. Detection antibody: 68395-3-PBS. Standard: Eg31815. Range: 0.098-100 ng/mL