

For Research Use Only

Beta-2-Microglobulin Monoclonal antibody, PBS Only



Catalog Number: 68395-1-PBS

Basic Information

Catalog Number:

68395-1-PBS

Size:

100ug, Concentration: 1mg/ml by Nanodrop;

Source:

Mouse

Isotype:

IgG1

GenBank Accession Number:

BC032589

GeneID (NCBI):

567

ENSEMBL Gene ID:

ENSG00000166710

UNIPROT ID:

P61769

Full Name:

beta-2-microglobulin

Calculated MW:

119 aa, 14 kDa

Observed MW:

12-14 kDa

Purification Method:

Protein A purification

CloneNo.:

1H3F4

Applications

Tested Applications:

IF/ICC, FC, ELISA

Species Specificity:

human

Background Information

Beta-2-microglobulin (B2M) is a component of MHC class I molecules, which are present on the surface of nearly all nucleated cells. It can be found in body fluids under physiologic conditions as a result of shedding from cell surfaces or intracellular release. B2M has various biological functions, including antigen presentation. Investigations reveal that increased synthesis and release of B2M are present in several malignant diseases. This antibody can be used for staining living cells.

Storage

Storage:

Store at -80°C.

Storage Buffer:

PBS Only

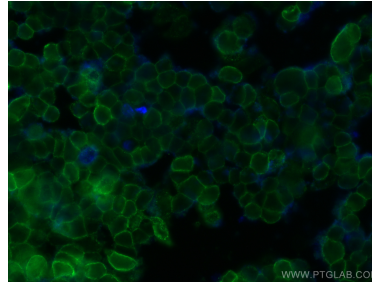
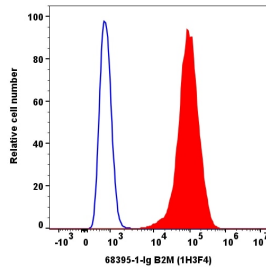
For technical support and original validation data for this product please contact:

T: 1 (888) 4PTGLAB (1-888-478-4522) (toll free in USA), or 1(312) 455-8498 (outside USA)

E: proteintech@ptglab.com
W: ptglab.com

This product is exclusively available under Proteintech Group brand and is not available to purchase from any other manufacturer.

Selected Validation Data



1×10^6 Jurkat cells were surface stained with 1 μ g Beta-2-Microglobulin Monoclonal antibody (68395-1-Ig, Clone:1H3F4) and CoraLite488-conjugated Goat Anti-Mouse IgG(H+L) (Cat.NO. SA00013-1)(N/A), or 1 μ g KLH (66360-1-Ig, Clone: T1F8D3F10) (N/A). Cells were not fixed. This data was developed using the same antibody clone with 68395-1-PBS in a different storage buffer formulation.

Immunofluorescent analysis of NCCIT cells (non-fixation) using Beta-2-Microglobulin antibody (68395-1-Ig, Clone: 1H3F4) at dilution of 1:2000 and CoraLite[®]488-Conjugated AffiniPure Goat Anti-Mouse IgG(H+L). This data was developed using the same antibody clone with 68395-1-PBS in a different storage buffer formulation.