

For Research Use Only

DPP4/CD26 Monoclonal antibody, PBS Only (Capture)

Catalog Number: 68383-1-PBS



Basic Information

Catalog Number:

68383-1-PBS

Size:

100ug, Concentration: 1mg/ml by Nanodrop;

Source:

Mouse

Isotype:

IgG1

GenBank Accession Number:

BC013329

GeneID (NCBI):

1803

UNIPROT ID:

P27487

Full Name:

dipeptidyl-peptidase 4

Calculated MW:

88 kDa

Observed MW:

110 kDa

Purification Method:

Protein G purification

CloneNo.:

2G6D11

Applications

Tested Applications:

WB, IF/ICC, Sandwich ELISA, Indirect ELISA, Sample test

Species Specificity:

human, pig, rabbit

Product Information

68383-1-PBS targets DPP4/CD26 as part of a matched antibody pair:

MP50051-1: 68383-1-PBS capture and 68383-2-PBS detection (validated in Sandwich ELISA)

Unconjugated mouse monoclonal antibody pair in PBS only (BSA and azide free) storage buffer at a concentration of 1 mg/mL, ready for conjugation.

This conjugation ready format makes antibodies ideal for use in many applications including: ELISAs, multiplex assays requiring matched pairs, mass cytometry, and multiplex imaging applications. Antibody use should be optimized by the end user for each application and assay.

Background Information

CD26, also known as DPP4 (dipeptidyl peptidase-4), is a 110 kDa type II cell-surface glycoprotein widely expressed on T cells, activated B cells, activated NK cells and myeloid cells as well as on epithelial cells, fibroblasts, mesothelium, and endothelial cells of a variety of tissues (PMID:33777580; 26919392). It has ecto-enzyme activity in its extracellular domain and cleaves amino-terminal dipeptides with either L-proline or L-alanine at the penultimate position (PMID: 9553764). CD26 plays roles in diverse biological processes such as immunoregulation, glucose homeostasis, and tumorigenesis (PMID: 33777580).

Storage

Storage:

Store at -80°C.

Storage Buffer:

PBS Only

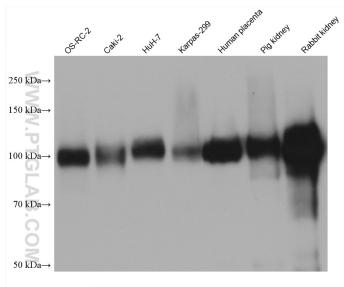
For technical support and original validation data for this product please contact:

T: 1 (888) 4PTGLAB (1-888-478-4522) (toll free in USA), or 1(312) 455-8498 (outside USA)

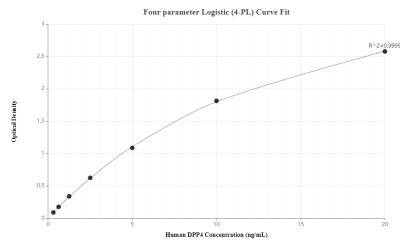
E: proteintech@ptglab.com
W: ptglab.com

This product is exclusively available under Proteintech Group brand and is not available to purchase from any other manufacturer.

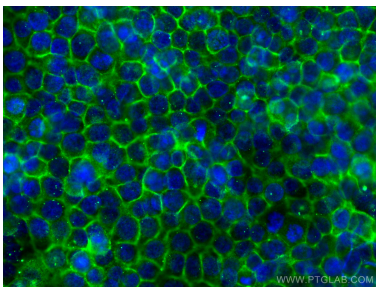
Selected Validation Data



Various lysates were subjected to SDS PAGE followed by western blot with 68383-1-Ig (DPP4/CD26 antibody) at dilution of 1:10000 incubated at room temperature for 1.5 hours. This data was developed using the same antibody clone with 68383-1-PBS in a different storage buffer formulation.



Sandwich ELISA standard curve of MP50051-1, DPP4 Monoclonal Matched Antibody Pair, PBS Only. Capture antibody: 68383-1-PBS. Detection antibody: 68383-2-PBS. Standard: Eg0157. Range: 0.313-20 ng/mL.



Immunofluorescent analysis of (-20°C Methanol) fixed HuH-7 cells using DPP4/CD26 antibody (68383-1-Ig, Clone: 2G6D11) at dilution of 1:800 and CoraLite®488-Conjugated AffiniPure Goat Anti-Mouse IgG(H+L). This data was developed using the same antibody clone with 68383-1-PBS in a different storage buffer formulation.