

For Research Use Only

TBCC Monoclonal antibody, PBS Only

Catalog Number: 68371-1-PBS



Basic Information

Catalog Number: 68371-1-PBS	GenBank Accession Number: BC020170	Purification Method: Protein G purification
Size: 100ug , Concentration: 1 mg/ml by Nanodrop;	GeneID (NCBI): 6903	CloneNo.: 2B7D9
Source: Mouse	UNIPROT ID: Q15814	
Isotype: IgG1	Full Name: tubulin folding cofactor C	
Immunogen Catalog Number: AG8962	Calculated MW: 346 aa, 39 kDa	
	Observed MW: 39 kDa	

Applications

Tested Applications:
WB, Indirect ELISA

Species Specificity:
Human, mouse, rat

Background Information

TBCC, also named CFC. Expressed in the retina. Expressed in the rod and cone photoreceptors, extending from the inner segments (IS), through the outer nuclear layer (ONL) and into the synapses in the outer plexiform layer (OPL). Strongly expressed to the photoreceptor connecting cilium at the tips of the IS (at protein level). Cofactor C was cytoplasmic in distribution (PMID: 12417528).

Storage

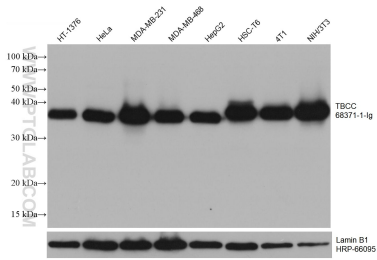
Storage:
Store at -80°C.

Storage Buffer:
PBS Only

For technical support and original validation data for this product please contact:
T: 1 (888) 4PTGLAB (1-888-478-4522) (toll free in USA), or 1(312) 455-8498 (outside USA) E: proteintech@ptglab.com
W: ptglab.com

This product is exclusively available under Proteintech Group brand and is not available to purchase from any other manufacturer.

Selected Validation Data



Various lysates were subjected to SDS PAGE followed by western blot with 68371-1-Ig (TBCC antibody) at dilution of 1:10000 incubated at room temperature for 1.5 hours. The membrane was stripped and reblotted with HRP-conjugated Lamin B1 Monoclonal antibody (HRP-66095) as loading control. This data was developed using the same antibody clone with 68371-1-PBS in a different storage buffer formulation.